



A CONNECTED WORLD
BEYOND YOUR IMAGINATION



PRODUCT MANUAL 产品手册

Communication Products

RF Coaxial Connectors
Cable Assemblies
Adapters & Accessories



909 Ridgebrook Road., Sparks, Maryland 21152, USA
TEL : +1-410-583-1701 FAX : +1-410-583-1704
E-mail: sales@pulsesupply.com
<https://www.pulsesupply.com/veecom>



目录 Contents

003	公司简介 COMPANY PROFILE
005	编码系统 CODE NUMBER SYSTEM
007	产品 PRODUCTS
135	技术信息 TECHNICAL INFORMATION

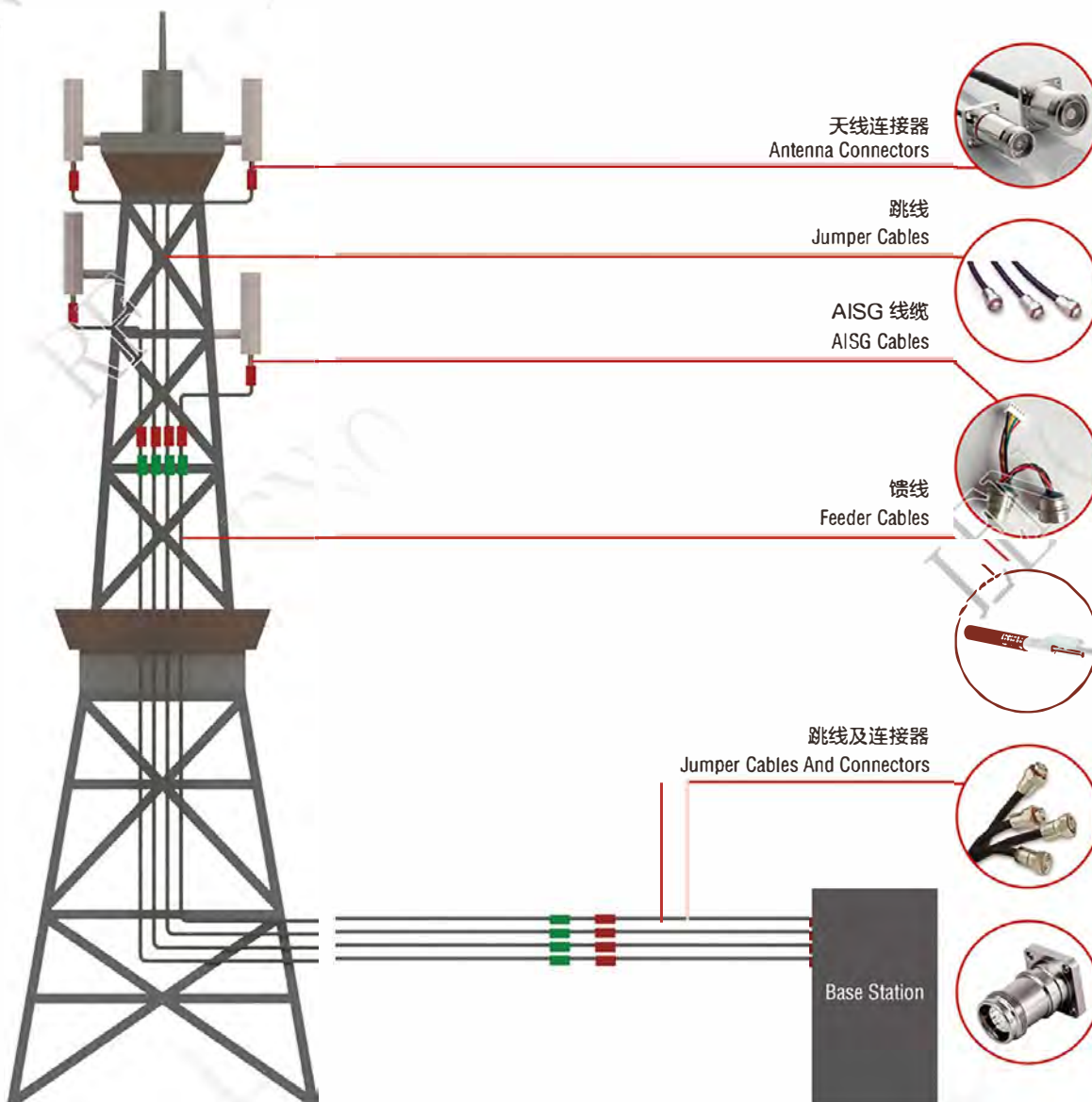
009	RF COAXIAL CONNECTORS
010	MMCX
014	MCX
018	SMB
022	SMA
030	SMP
034	TNC
038	BNC
042	BMA
046	F
050	FAKRA
054	N
070	DIN 7/16
081	1.0-2.3
085	4.3-10
093	4.1-9.5
099	NEX10
102	CABLE ASSEMBLIES
103	Cable Assemblies
108	Jumper Cable
111	Test Cable
113	AISG Cable
119	OPTICAL FIBER CABLE
120	FTTA
121	FTTH
122	MEASUREMENT TOOLS
123	Adaptor
131	Termination

产品与应用

PRODUCT AND APPLICATION

通信基站 / 直放站连接解决方案

Mobile Communication Base Station/DMS Connection Solution





微波通讯
COMMUNICATION



汽车电子
AUTOMOTIVE



医疗电子
MEDICAL

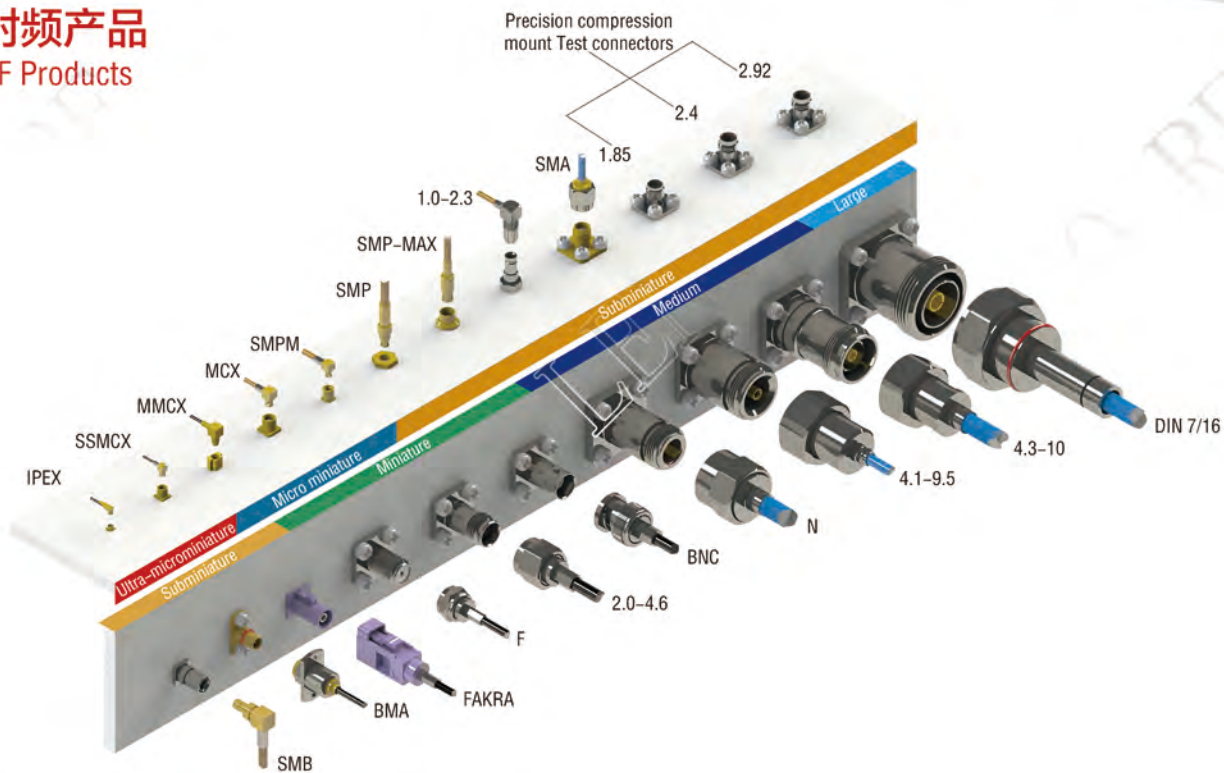


轨道交通
RAILWAY

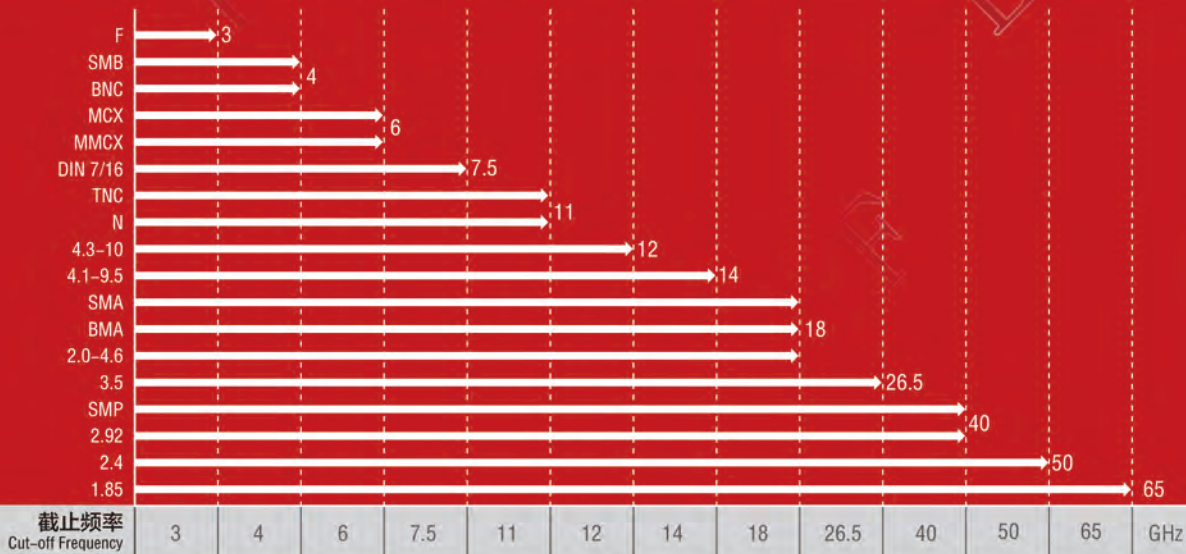


仪器测试
MEASUREMENT

射频产品 RF Products



连接器系列
Connector Series



编码原则

CODE NUMBER DESIGNATION

连接器

Connector

50 A3 A 1 1 S -A01 -001

流水号

Successive Number

应用方式

A,B,C,D: 柔性线
S: 半刚 / 半柔线缆
L: 螺纹线缆
T: 其它

Application

A,B,C,D: Flexible Cable
S: Semi-Rigid Cable / Semi-Flexible Cable
L: Corrugated Cable
T: others

接头外形

S: 直形
R: 弯形
T: T形
Y: Y形
D: 保护盖
U: U形
O: 其它

Appearance

S: Straight
R: Right Angle
T: T
Y: Y
D: Dust Cap
U: U
O: Others

固定类型

1: 单压
2: 双压
3: 扭转旋入
4: 压迫固定
5: 插入焊接
6: 转接头
O: 其它

Fixed Type

1: Single Crimp
2: Double Crimp
3: Clamp
4: Press-In
5: Solder
6: Adapter
O: Others

终端类型

1: 线缆
2: 印刷电路板
3: 前端防水
4: 后端防水
5: 平板
O: 其它

Terminal Type

1: Cable
2: PCB
3: Front Waterproof
4: Back Waterproof
5: Flange Mount
O: Others

接头类型

A: 公头
B: 母头
C: 公转母
D: 公转母转公
E: 母转母
F: 母转公转母
G: 公转公转公
H: 母转母转母
J: 公转公
O: 其它

Connector Type

A: Male
B: Female
C: Male to Female
D: Male to Female to Male
E: Female to Female
F: Female to Male to Female
G: Male to Male to Male
H: Female to Female to Female
J: Male to Male
O: Others

接头系列

A1: 1.0-2.3 系列
A2: Nex10 系列
A3: 4.3-10 系列
A4: 4.1-9.5 系列
A7: DIN 7/16 系列
BM: BMA 系列
BN: BNC 系列
FC: F 系列
FK: FAKRA 系列
MA: SMA 系列
MB: SMB 系列
MC: MMCX 系列
MX: MCX 系列
NC: N 系列
SP: SMP 系列
TC: TNC 系列

Connector Series

A1: 1.0-2.3
A2: Nex10
A3: 4.3-10
A4: 4.1-9.5
A7: DIN 7/16
BM: BMA
BN: BNC
FC: F
FK: FAKRA
MA: SMA
MB: SMB
MC: MMCX
MX: MCX
NC: N
SP: SMP
TC: TNC

阻抗

50: 50 欧姆
75: 75 欧姆

Impedance

50: 50 OHMS
75: 75 OHMS

转接器

Adapter

接头阻抗
Impedance

接头系列
Connector Series

接头外形
Appearance

接头系列
Connector Series

线缆组件

Cable Assembly

接头系列 1
Connector Series1

接头系列 2
Connector Series2

线缆类型
Cable Type

线缆长度
Cable Length

RF COAXIAL CONNECTORS



RF COAXIAL CONNECTORS



MMCX

产品特点

- 频率可达到 6 GHz;
- 驻波比 (直式) : $\leq 1.15 @4\text{GHz}$;
- 快速连接 / 分开, 节省安装时间;
- 提供多种形式: 插座 (直型和弯型), 印刷电路板 (直型和弯型)。

Product Features

- Frequency range up to 6GHz;
- VSWR(straight connector): $\leq 1.15 @4\text{GHz}$;
- Quick connect / disconnect snap-on mating reduces installation time;
- Available in many styles: Plugs(Straight and Right Angle) and Printed Circuit Board (Straight and Right Angle) .

应用范围

- 基站;
- 天线;
- 网络应用;
- 射频测试系统;
- 仪器仪表;
- 电信系统;
- GPS 系统;
- 无线电路板。

Application

- Base Station;
- Antenna;
- Broadband communication;
- RF test;
- Instrumentation;
- Telecommunication;
- GPS Receiver;
- Radio Board.

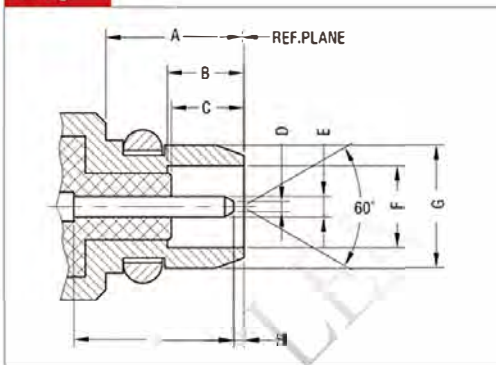
介面尺寸

标准: CECC 22000

Interface Dimension

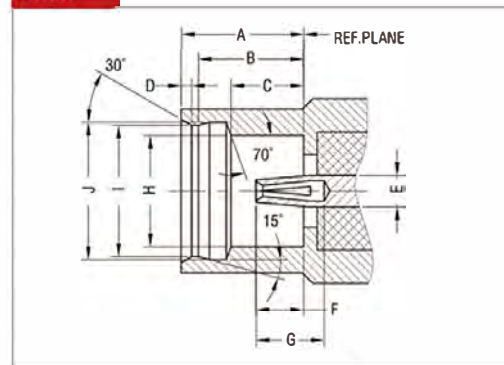
Standard: CECC 22000

Plug



NO.	DIMENSION	
	mm	Inch
A	2.69 Min.	0.106 Min.
B	1.45 Min.	0.057 Min.
C	1.23 Min.	0.048 Min.
D	0.20 Max.	0.008 Max.
E	0.39-0.43	0.015-0.017
F	1.58-1.62	0.062-0.064
G	2.40 Max.	0.094 Max.
H	0.00-0.25	0.000-0.010
I	3.15 Max.	0.124 Max.

Jack



NO.	DIMENSION	
	mm	Inch
A	2.59-2.65	0.102-0.104
B	2.31-2.34	0.091-0.092
C	1.58-1.62	0.062-0.064
D	0.23 Max.	0.009 Max.
E	0.70 Ref.	0.028 Ref.
F	0.89-1.19	0.035-0.047
G	1.40 Min.	0.055 Min.
H	2.41 Min.	0.095 Min.
I	2.87-2.90	0.113-0.114
J	3.00-3.04	0.118-0.120

Technical Specification

电气性能	参数		Electrical Data	Data	
频段范围	50 Ω		Impedance	50 Ω	
电压驻波比	DC-6GHz		Frequency Range	DC-6GHz	
插入损耗	1.15 Max(0-4GHz); 1.40 Max(4-6GHz).		VSWR(f=GHz)	1.15 Max(0-4GHz); 1.40 Max(4-6GHz).	
测试电压	500V rms		Test Voltage	500V rms	
工作电压	335V rms		Work Voltage	335V rms	
绝缘阻抗	$\geq 1000M\Omega$		Insulation Resistance	$\geq 1000M\Omega$	
接触电阻	内导体: 10 m Ω Max; 外导体: 5 m Ω Max.		Contact Resistance	Center Contact: 10 m Ω Max; Outer Contact: 5m Ω Max.	
机械性能	参数		Mechanical Data	Data	
插拔次数	≥ 500		Mating Cycles	≥ 500	
啮合力	≤ 3.4 lbs.		Engagement Force	≤ 3.4 lbs.	
分离力	1.4 lbs. to 3.4 lbs.		Disengagement Force	1.4 lbs. to 3.4 lbs.	
内导体保持力	轴向 ≥ 2.3 lbs.		Center Contact Captivation	axial ≥ 2.3 lbs.	
材料特性	参数		Material Data	Data	
连接器零件	材料	电镀	Connector Part	Material	Finish
外导体	黄铜	镀金	Body	Brass	Gold Plated
内导体	黄铜 / 铍铜	镀金	Center Contact	Brass/Beryllium Copper	Gold Plated
扣环	铍铜	镀金	Ring	Beryllium Copper	Gold Plated
绝缘体	PTFE		Insulator	PTFE	
环境特性	参数		Environmental Data	Data	
温度范围	-45 $^{\circ}$ C ~+125 $^{\circ}$ C		Temperature Range	-45 $^{\circ}$ C ~+125 $^{\circ}$ C	
耐腐蚀性 (盐雾)	MIL-STD-202 method 101. Condition B		Corrosion (Salt Spray)	MIL-STD-202 method 101. Condition B	
振动	MIL-STD-202 method 204. Condition D		Vibration	MIL-STD-202 method 204. Condition D	
冲击	MIL-STD-202 method 213. Condition I		Shock	MIL-STD-202 method 213. Condition I	
热冲击	MIL-STD-202 method 107. Condition B		Thermal Shock	MIL-STD-202 method 107. Condition B	
抗潮湿性	MIL-STD-202 method 106		Moisture Resistance	MIL-STD-202 method 106	

注: 这些特性具有典型代表性, 不适用于所有连接器。

Note: These characteristics are typical and may not apply to all connectors.

RF COAXIAL CONNECTORS



MCX

产品特点

- 频率可达到 6 GHz;
- 驻波比 (直式) : ≤ 1.20 ;
- 快速连接 / 分离推入式配合, 节省安装时间;
- 卓越的可靠性。

Product Features

- Frequency range up to 6GHz;
- VSWR(straight connector): ≤ 1.20 ;
- Quick connect / disconnect snap-on mating reduces installation time;
- High reliability.

应用范围

- 基站;
- 天线;
- 汽车电子;
- 无线通信系统;
- 射频测试仪器;
- 仪器仪表;
- 电信系统;
- GPS 系统。

Application

- Base Station;
- Antenna;
- Automotive;
- Wireless communication;
- RF test and measurement equipment;
- Instrumentation;
- Telecommunication;
- GPS Receiver.

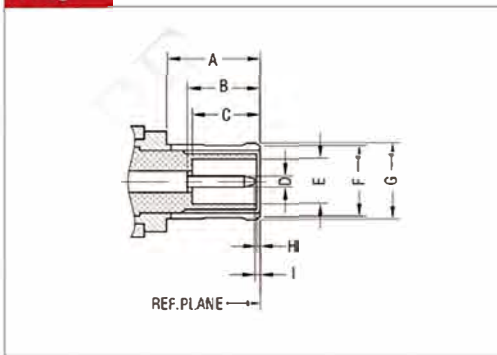
介面尺寸

标准: IEC 60169-36 / CECC 22220

Interface Dimension

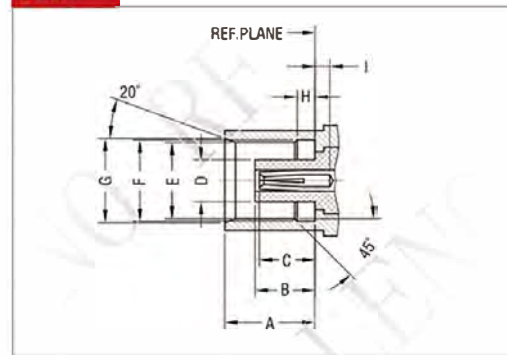
Standard: IEC 60169-36 / CECC 22220

Plug



NO.	DIMENSION	
	mm	Inch
A	4.15 Min.	0.163 Min.
B	2.80~3.20	0.110~0.126
C	2.80 Min.	0.110 Min.
D	0.48~0.53	0.019~0.021
E	2.00 Min.	0.079 Min.
F	0.60 Max.	0.142 Max.
G	3.80 Max.	0.150 Max.
H	0.00~0.30	0.00~0.012
I	0.15 Min.	0.006 Min.

Jack



NO.	DIMENSION	
	mm	Inch
A	4.00~4.12	0.157~0.162
B	2.60~2.80	0.102~0.110
C	2.30~2.80	0.091~0.110
D	1.98 Max.	0.078 Max.
E	3.42~3.48	0.135~0.137
F	3.60~3.75	0.142~0.148
G	3.80 Min.	0.150 Min.
H	0.75~0.85	0.030~0.033
I	0.00 Min.	0.000 Min.

Technical Specification

电气性能	参数		Electrical Data	Data	
阻抗	50 Ω		Impedance	50 Ω	
频段范围	DC-6GHz		Frequency Range	DC-6GHz	
电压驻波比	1.20 Max		VSWR	1.20 Max	
插入损耗 (f=GHz)	≤ 0.1x √ f dB		Insertion loss(f=GHz)	≤ 0.1x √ f dB	
测试电压	750V rms		Test Voltage	750V rms	
工作电压	335V rms		Working Voltage	335V rms	
绝缘阻抗	≥ 1000MΩ		Insulation Resistance	≥ 1000MΩ	
接触电阻	内导体 : 5 mΩ Max; 外导体 : 2.5 mΩ Max.		Contact Resistance	Center Contact: 5 mΩ Max; Outer Contact: 2.5 mΩ Max.	
机械性能	参数		Mechanical Data	Data	
插拔次数	≥ 500		Mating Cycles	≥ 500	
啮合力	≤ 25N		Engagement Force	≤ 25N	
分离力	8N-20N		Disengagement Force	8N-20N	
内导体保持力	轴向 ≥ 10N		Center Contact Captivation	axial ≥ 10N	
材料特性	参数		Material Data	Data	
连接器零件	材料	电镀	Connector Part	Material	Finish
外导体	黄铜 / 铍铜	镀金 / 镀镍	Body	Brass/ Beryllium Copper	Gold Plated / Nickel Plated
内导体	黄铜 / 磷铜 / 铍铜	镀金	Center Contact	Brass/Phosphor Bronze/Beryllium Copper	Gold Plated
压接套管	紫铜 / 黄铜	镀金 / 镀镍	Crimp Ferrule	Copper/Brass	Gold Plated / Nickel Plated
绝缘体	PTFE		Insulator	PTFE	
垫圈	硅橡胶		Gasket or O-Ring	Silicone Rubber	
环境特性	参数		Environmental Data	Data	
温度范围	-45℃ ~+125℃		Temperature Range	-45℃ ~+125℃	
耐腐蚀性 (盐雾)	MIL-STD-202 method 101. Condition B		Corrosion (Salt Spray)	MIL-STD-202 method 101. Condition B	
振动	MIL-STD-202 method 204. Condition D		Vibration	MIL-STD-202 method 204. Condition D	
冲击	MIL-STD-202 method 213. Condition I		Shock	MIL-STD-202 method 213. Condition I	
热冲击	MIL-STD-202 method 107. Condition B		Thermal Shock	MIL-STD-202 method 107. Condition B	
抗潮湿性	MIL-STD-202 method 106		Moisture Resistance	MIL-STD-202 method 106	

注：这些特性具有典型代表性，不适用于所有连接器。

Note: These characteristics are typical and may not apply to all connectors.

RF COAXIAL CONNECTORS



SMB

产品特点

- 频率可达 4GHz;
- 属于超小型同轴连接器;
- VSWR(直式): ≤ 1.30
- 推入式锁定安装;
- 有限空间里快速连接 / 安装紧密。

Product Features

- Frequency range up to 4GHz ;
- Subminiature Coaxial connector;
- VSWR(straight connector): ≤ 1.30 ;
- Snap-on coupling;
- Fast connection in limited spaces/ High packing density .

应用范围

- 基站;
- 移动通信系统;
- 电子元件;
- 测试仪器;
- 视频应用;
- 计算机 / 局域网;
- 民用及军事通讯;
- 航天航空。

Application

- Base Station;
- Mobile Communication System;
- Components;
- Instrumentation;
- Video System;
- PC/LAN;
- Civil and Military Telecommunication;
- Aeronautics.

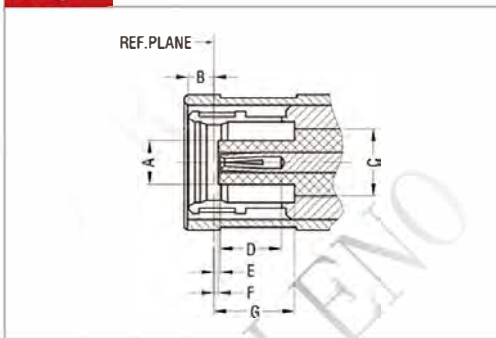
介面尺寸

标准: IEC60169-10 / CECC 22130

Interface Dimension

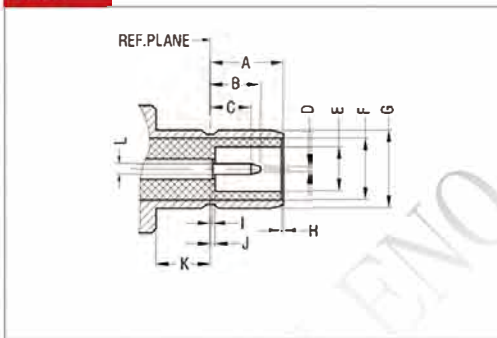
Standard: IEC60169-10 / CECC 22130

Plug



NO.	DIMENSION	
	mm	Inch
A	2.06 Max.	0.081 Max.
B	1.63 Max.	0.064 Max.
C	3.05 Non.	0.120 Non.
D	2.97 Min.	0.117 Min.
E	0.18-0.94	0.007-0.037
F	0.18 Min.	0.007 Min.
G	3.58 Min.	0.141 Min.

Jack



NO.	DIMENSION	
	mm	Inch
A	3.33-3.58	0.131-0.141
B	2.97 Max.	0.117 Max.
C	1.32 Min.	0.052 Min.
D	0.18 Max.	0.007 Max.
E	2.08 Min.	0.082 Min.
F	3.05 Non.	0.120 Nom.
G	3.71 Max.	0.146 Max.
H	0.00 Min.	0.000 Min.
I	0.18 Max.	0.007 Max.
J	0.18 Max.	0.007 Max.
K	1.65 Min.	0.065 Min.
L	0.48-0.53	0.019-0.021

Technical Specification

电气性能	参数	Electrical Data	Data
阻抗	50 Ω	Impedance	50 Ω
频段范围	DC-4GHz	Frequency Range	DC-4GHz
电压驻波比	≤ 1.30	VSWR	≤ 1.30
插入损耗 (f=GHz)	$\leq 0.1x \sqrt{f}$ dB	Insertion loss(f=GHz)	$\leq 0.1x \sqrt{f}$ dB
测试电压	750V rms	Test Voltage	750V rms
工作电压	250V rms	Work Voltage	250V rms
绝缘阻抗	$\geq 5000M\Omega$	Insulation Resistance	$\geq 5000M\Omega$
接触电阻	内导体 : 5 m Ω Max; 外导体 : 2.5 m Ω Max.	Contact Resistance	Center Contact: 5 m Ω Max; Outer Contact: 2.5 m Ω Max.
射频泄漏	≥ 55 dB@1GHz	Rf-Leakage	≥ 55 dB@1GHz
机械性能	参数	Mechanical Data	Data
插拔次数	≥ 500	Mating Cycles	≥ 500
啮合力	$\leq 63N$	Engagement Force	$\leq 63N$
分离力	8-63N	Disengagement Force	8N-63N
内导体保持力	轴向 $\geq 10N$	Center Contact Captivation	axial $\geq 10N$
材料特性	参数	Material Data	Data
连接器零件	材料 电镀	Connector Part	Material Finish
外导体	黄铜 镀金 / 镀镍	Body	Brass Gold Plated/ Nickel Plated
连接螺母	黄铜 镀金 / 镀镍	Coupling Nut	Brass Gold Plated/ Nickel Plated
内导体	黄铜 / 磷铜 / 铍铜 镀金	Center Contact	Brass/ Phosphor Bronze/Beryllium Copper Gold Plated
压接套管	紫铜 / 黄铜 镀金 / 镀镍	Crimp Ferrule	Copper/Brass Gold Plated/ Nickel Plated
绝缘体	PTFE	Insulator	PTFE
垫圈	硅橡胶	Gasket or O-Ring	Silicone Rubber
环境特性	参数	Environmental Data	Data
温度范围	-45 $^{\circ}C$ ~+125 $^{\circ}C$	Temperature Range	-45 $^{\circ}C$ ~+125 $^{\circ}C$
耐腐蚀性 (盐雾)	MIL-STD-202 method 101. Condition B	Corrosion (Salt Spray)	MIL-STD-202 method 101. Condition B
振动	MIL-STD-202 method 204. Condition B	Vibration	MIL-STD-202 method 204. Condition B
冲击	MIL-STD-202 method 213. Condition I	Shock	MIL-STD-202 method 213. Condition I
热冲击	MIL-STD-202 method 107. Condition B	Thermal Shock	MIL-STD-202 method 107. Condition B
抗潮湿性	MIL-STD-202 method 106	Moisture Resistance	MIL-STD-202 method 106

注：这些特性具有典型代表性，不适用于所有连接器。

Note: These characteristics are typical and may not apply to all connectors.

RF COAXIAL CONNECTORS



SMA

产品特点

- 频率可达到 18 GHz;
- 驻波比 (直式) : ≤ 1.05 ;
- 最优质的电气性能;
- 高品质标准;
- 高可靠性, 寿命周期长。

Product Features

- Frequency range up to 18 GHz;
- VSWR (straight connector): ≤ 1.05 ;
- Optimal electrical characteristics;
- High quality standard;
- High reliability and long life cycle.

应用范围

- 基站;
- 移动通讯系统;
- 电子元件;
- 测试仪器;
- 军用 / 航空;
- 计算机 / 局域网;
- 过程控制系统;
- 电信。

Application

- Base Station;
- Mobile communication;
- Components;
- Instrumentation;
- Military /Aeronautics;
- PC/LAN;
- Process Controls;
- Telecom.

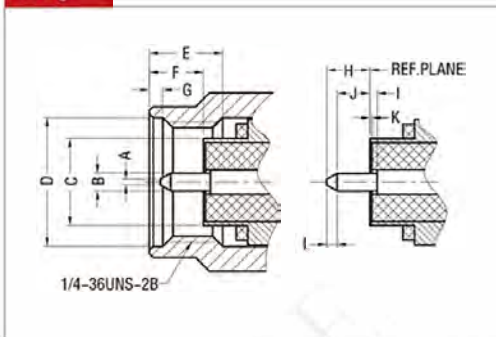
介面尺寸

标准: IEC60169-15 / MIL-STD-348A

Interface Dimension

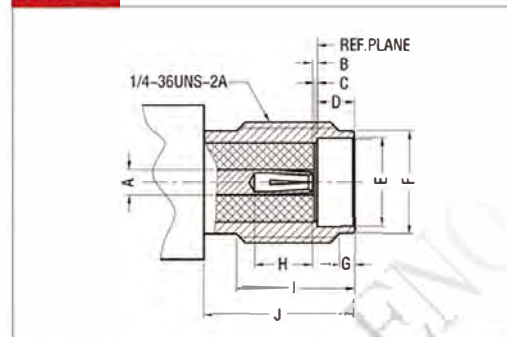
Standard: IEC60169-15 / MIL-STD-348A

Plug



NO.	DIMENSION	
	mm	Inch
A	0.38 Max.	0.015 Max.
B	0.902~0.940	0.0355~0.0370
C	4.59 Max.	0.1808 Max.
D	6.35 Min.	0.250 Min.
E	3.30 Min.	0.130 Min.
F	3.43 Max.	0.135 Max.
G	0.38~1.14	0.015~0.045
H	2.54 Max.	0.100 Max.
I	0.25 Max.	0.010 Max.
J	1.27 Min.	0.050 Min.
K	0.25 Max.	0.010 Max.
L	0.38 Min.	0.015 Min.

Jack



NO.	DIMENSION	
	mm	Inch
A	1.245~1.295	0.049~0.051
B	0.00~0.25	0.000~0.010
C	0.00~0.25	0.000~0.010
D	1.88~1.98	0.074~0.078
E	4.60~4.67	0.181~0.184
F	5.28~5.49	0.208~0.216
G	0.38~1.14	0.015~0.045
H	2.92 Min.	0.115 Min.
I	4.32 Min.	0.170 Min.
J	5.54 Min.	0.218 Min.

Technical Specification

电气性能		参数	Electrical Data	Data
阻抗		50 Ω	Impedance	50 Ω
频段范围		DC-18GHz	Frequency Range	DC-18GHz
电压驻波比(f=GHz)		≤ 1.1+0.02x f	VSWR(f=GHz)	≤ 1.1+0.02x f
插入损耗 (f=GHz)		≤ 0.04x √ f dB	Insertion loss(f=GHz)	≤ 0.04x √ f dB
测试电压		1000V rms	Test Voltage	1000V rms
工作电压		480V rms	Work Voltage	480V rms
绝缘阻抗		≥ 5000MΩ	Insulation Resistance	≥ 5000MΩ
接触电阻		内导体 : 3.0 mΩ Max; 外导体 : 2.0 mΩ Max.	Contact Resistance	Center Contact: 3.0 mΩ Max; Outer Contact: 2.0 mΩ Max.
射频泄漏		≥ 100 dB	Rf-Leakage	≥ 100 dB
机械性能		参数	Mechanical Data	Data
插拔次数		≥ 500	Mating Cycles	≥ 500
连接力矩		1.7Nm Max; 建议: 0.8-1.1Nm	Coupling Torque	1.7Nm Max; Rec. 0.8-1.1Nm
连接螺母保持力		≥ 270N	Coupling Nut Retention	≥ 270N
内导体保持力		轴向 ≥ 27N 径向 ≥ 3Ncm	Center Contact Captivation	Axial ≥ 27N Radial ≥ 3Ncm
材料特性		参数	Material Data	Data
连接器零件	材料	电镀	Connector Part	Material Finish
外导体	黄铜 / 不锈钢	镀金 / 镀银 / 镀镍 / 镀三元合金 / 钝化	Body	Brass/Stainless Steel Gold Plated/Silver Plated/Nickel Plated/ White Bronze Plated/Passivation
连接螺母	黄铜 / 不锈钢	镀金 / 镀镍 / 镀三元合金 / 钝化	Coupling Nut	Brass/Stainless Steel Gold Plated/Nickel Plated/White Bronze Plated/ Passivation
内导体	黄铜 / 磷铜 / 铍铜	镀金 / 镀银	Center Contact	Brass/Phosphor Bronze/Beryllium Copper Gold Plated/Silver Plated
压接套管	紫铜 / 黄铜	镀金 / 镀银	Crimp Ferrule	Copper/Brass Gold Plated/Silver Plated
绝缘体	PTFE		Insulator	PTFE
垫圈	硅橡胶		Gasket or O-Ring	Silicone Rubber
环境特性		参数	Environmental Data	Data
温度范围		-45℃ ~+125℃	Temperature Range	-45℃ ~+125℃
耐腐蚀性 (盐雾)		MIL-STD-202 method 101. Condition B	Corrosion (Salt Spray)	MIL-STD-202 method 101. Condition B
振动		MIL-STD-202 method 204. Condition D	Vibration	MIL-STD-202 method 204. Condition D
冲击		MIL-STD-202 method 213. Condition I	Shock	MIL-STD-202 method 213. Condition I
热冲击		MIL-STD-202 method 107. Condition B	Thermal Shock	MIL-STD-202 method 107. Condition B
抗潮湿性		MIL-STD-202 method 106	Moisture Resistance	MIL-STD-202 method 106

注：这些特性具有典型代表性，不适用于所有连接器。

Note: These characteristics are typical and may not apply to all connectors.

射频同轴连接器

RF COAXIAL CONNECTORS



SMP

产品特点

- 频率可达 40GHz;
- VSWR(直式): ≤ 1.50 ;
- 连接器间最小距离: 5mm;
- 板对板最小距离: 9mm;
- 经济型板对板连接。

Product Features

- Frequency range up to 40GHz;
- VSWR(straight connector): ≤ 1.50 ;
- Minimum spacing connector pairs: 5 mm;
- Minimum spacing board to board: 9 mm;
- Economical board-to-board connections.

应用范围

- 基站;
- 电缆组件;
- 电子元件;
- 测试仪器;
- 雷达;
- 卫星;
- 电信系统。

Application

- Base Station;
- Cable Assemblies;
- Components;
- Instrumentation;
- Radar;
- Satellite;
- Telecom.

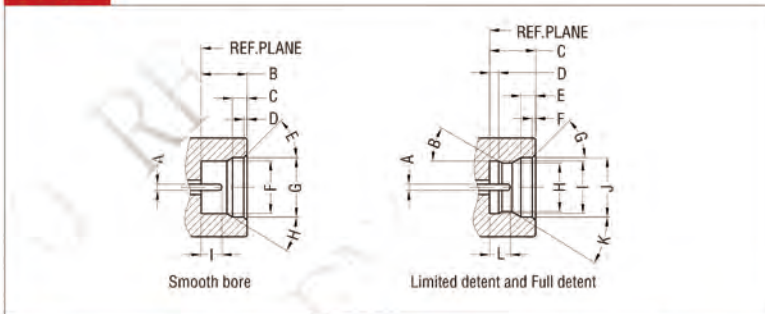
介面尺寸

标准: IEC61169-44 / MIL-STD-348A

Interface Dimension

Standard: IEC61169-44 / MIL-STD-348A

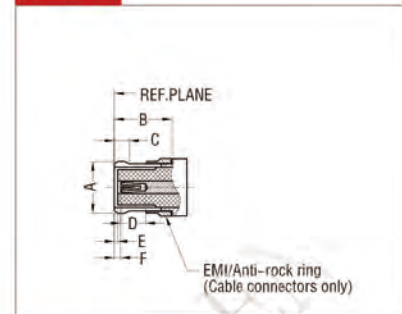
Plug



NO.	DIMENSION	
	mm	Inch
A	0.38-0.41	0.015-0.016
B	2.74-2.84	0.108-0.112
C	0.84-0.94	0.033-0.037
D	0.08-0.20	0.003-0.008
E	40° ~50°	40° ~50°
F	3.15-3.20	0.124-0.126
G	3.53-3.68	0.139-0.145
H	31° ~33°	31° ~33°
I	1.14-1.40	0.045-0.055

NO.	DIMENSION	
	mm	Inch
A	0.38-0.41	0.015-0.016
B	29° ~31°	29° ~31°
C	2.74-2.84	0.108-0.112
D	0.52-0.60	0.0204-0.0236
E	0.84-0.94	0.033-0.037
F	0.08-0.20	0.003-0.008
G	40° ~50°	40° ~50°
H	3.02-3.07 (Limited detent)	0.119-0.121 (Limited detent)
	2.92-2.97 (Full detent)	0.115-0.117 (Full detent)
I	3.15-3.20	0.124-0.126
J	3.53-3.68	0.139-0.145
K	1.14-1.40	0.045-0.055

Jack



NO.	DIMENSION	
	mm	Inch
A	3.43 Max.	0.135 Max.
B	2.84 Min.	0.112 Min.
C	0.46-0.64 (Uncabled)	0.018-0.025 (Uncabled)
	0.64-0.89 (Cabled)	0.025-0.035 (Cabled)
D	1.78 Min.	0.070 Min.
E	0.00 Min.	0.00 Min.
F	0.00 Min.	0.00 Min.

技术参数

Technical Specification

电气性能		参数	Electrical Data	Data	
阻抗		50 Ω	Impedance	50 Ω	
频段范围		DC-40GHz	Frequency Range	DC-40GHz	
电压驻波比		≤ 1.50	VSWR	≤ 1.50	
插入损耗		0.1 dB Max.@1GHz	Insertion loss	0.1 dB max.@1GHz	
测试电压		500V rms	Test Voltage	500V rms	
工作电压		335V rms	Work Voltage	335V rms	
绝缘阻抗		≥ 5000MΩ	Insulation Resistance	≥ 5000MΩ	
接触电阻		内导体: 6.0 mΩ Max; 外导体: 2.0 mΩ Max.	Contact Resistance	Center Contact: 6.0 mΩ Max; Outer Contact: 2.0 mΩ Max.	
机械性能		参数	Mechanical Data	Data	
插拔次数		≥ 500	Mating Cycles	≥ 500	
啮合力		全限制式: 68N Max. 限制式: 45N Max. 滑入式: 9N Max.	Engagement Force	Full detent: 68N Max. Limited detent: 45N Max. Smooth Bore: 9N Max.	
分离力		全限制式: 22N Min. 限制式: 9N Min. 滑入式: 2.2N Min.	Disengagement Force	Full detent: 22N Min. Limited detent: 9N Min. Smooth Bore: 2.2N Min.	
内导体保持力		轴向 ≥ 7N	Center Contact Captivation	Axial ≥ 7N	
材料特性		参数	Material Data	Data	
连接器零件	材料	电镀	Connector Part	Material	Finish
外导体	黄铜 / 镀铜	镀金 / 镀镍	Body	Brass/Beryllium Copper	Gold Plated/ Nickel Plated
连接螺母	黄铜	镀金 / 镀镍	Coupling Nut	Brass	Gold Plated/ Nickel Plated
内导体	黄铜 / 镀铜	镀金	Center Contact	Brass/Beryllium Copper	Gold Plated
压接套管	紫铜 / 黄铜	镀金 / 镀镍	Crimp Ferrule	Copper/Brass	Gold Plated/ Nickel Plated
绝缘体	PTFE		Insulator	PTFE	
垫圈	硅橡胶		Gasket or O-Ring	Silicone Rubber	
环境特性		参数	Environmental Data	Data	
温度范围		-45℃ ~+125℃	Temperature Range	-45℃ ~+125℃	
耐腐蚀性 (盐雾)		MIL-STD-202 method 101. Condition B	Corrosion (Salt Spray)	MIL-STD-202 method 101. Condition B	
振动		MIL-STD-202 method 204. Condition B	Vibration	MIL-STD-202 method 204. Condition B	
冲击		MIL-STD-202 method 213. Condition A	Shock	MIL-STD-202 method 213. Condition A	
热冲击		MIL-STD-202 method 107. Condition B	Thermal Shock	MIL-STD-202 method 107. Condition B	
抗潮湿性		MIL-STD-202 method 106	Moisture Resistance	MIL-STD-202 method 106	

注：这些特性具有典型代表性，不适用于所有连接器。

Note: These characteristics are typical and may not apply to all connectors.

射频同轴连接器

RF COAXIAL CONNECTORS



TNC

产品特点

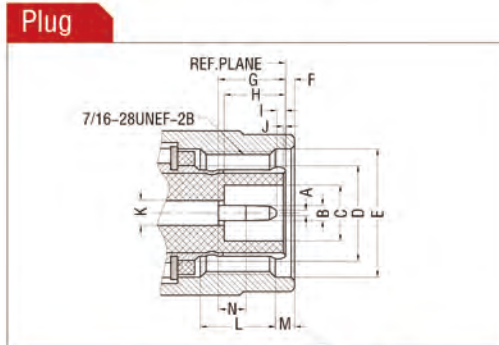
- 频率可达到 4 GHz, 最大可达到 11 GHz;
- VSWR(直式): ≤ 1.20 ;
- 一种螺纹连接结构的 BNC;
- 50 Ω 和 75 Ω 系列界面完全兼容;
- 极好的抗震性, 适用于高强度环境。

应用范围

- 基站;
- 天线;
- 汽车电子;
- 测试仪器;
- 雷达;
- 航天航空;
- 网络分析仪;
- 电信系统。

介面尺寸

标准: IEC60169-17 / MIL-STD-348A



NO.	DIMENSION	
	mm	Inch
A	0.64 Max.	0.025 Max.
B	1.32-1.37	0.052-0.054
C	4.83 Min.	0.190 Min.
D	8.18 Max.	0.322 Max.
E	11.18 Min.	0.440 Min.
F	1.98 Max.	0.078 Max.
G	5.33-5.84	0.210-0.230
H	5.28-5.79	0.208-0.228
I	0.08-1.02	0.003-0.040
J	0.15 Min.	0.006 Min.
K	2.06-2.21	0.081-0.087
L	3.96 Min.	0.156 Min.
M	1.60 Min.	0.063 Min.
N	1.98 Min.	0.078 Min.

Product Features

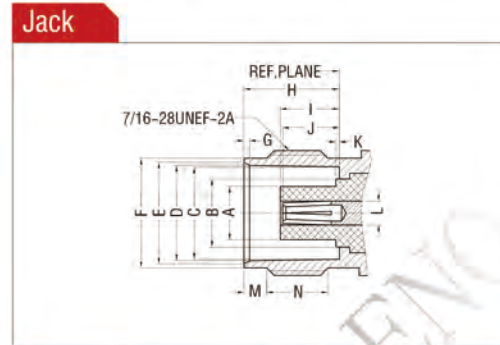
- Frequency range optimum up to 4 GHz, max. up to 11 GHz;
- VSWR(straight connector): ≤ 1.20 ;
- Threaded coupling mechanism of the BNC;
- Interchangeable with 50 Ω and 75 Ω , to ensure nondestructive mating;
- Excellent shock resistance for high strength environments.

Application

- Base Station;
- Antenna;
- Automotive;
- Instrumentation;
- Radar;
- Avionics/ Aeronautics;
- Network Analyzer;
- Telecom.

Interface Dimension

Standard: IEC60169-17 / MIL-STD-348A



NO.	DIMENSION	
	mm	Inch
A	4.72 Max.	0.186 Max.
B	6.50 Max.	0.256 Max.
C	8.10-8.15	0.319-0.321
D	8.31-8.46	0.327-0.333
E	8.79-9.04	0.346-0.356
F	9.60-9.68	0.378-0.381
G	0.38-0.76	0.015-0.030
H	8.31-8.51	0.327-0.335
I	4.78-5.28	0.188-0.208
J	4.72-5.28	0.186-0.208
K	0.15 Max.	0.006 Max.
L	2.06-2.21	0.081-0.087
M	1.73-2.24	0.068-0.088
N	4.75 Min.	0.187 Min.

技术参数

Technical Specification

电气性能	参数	Electrical Data	Data		
阻抗	50 Ω	Impedance	50 Ω		
频段范围	DC-11GHz	Frequency Range	DC-11GHz		
电压驻波比 (f=GHz)	$\leq 1.1+0.02 \times f$	VSWR(f=GHz)	$\leq 1.1+0.02 \times f$		
插入损耗 (f=GHz)	$\leq 0.1 \times \sqrt{f}$ dB	Insertion loss(f=GHz)	$\leq 0.1 \times \sqrt{f}$ dB		
测试电压	1500V rms	Test Voltage	1500V rms		
工作电压	500V rms	Work Voltage	500V rms		
绝缘阻抗	$\geq 5000M \Omega$	Insulation Resistance	$\geq 5000M \Omega$		
接触电阻	内导体: 1.5 mΩ Max; 外导体: 1.0 mΩ Max.	Contact Resistance	Center Contact: 1.5 mΩ Max; Outer Contact: 1.0 mΩ Max.		
机械性能	参数	Mechanical Data	Data		
插拔次数	≥ 500	Mating Cycles	≥ 500		
连接力矩	1.7Nm Max; 建议: 0.46-0.69Nm	Coupling Torque	1.7Nm Max; Rec. 0.46-0.69Nm		
连接螺母保持力	$\geq 445N$	Coupling Nut Retention	$\geq 445N$		
内导体保持力	轴向 $\geq 27N$	Center Contact Captivation	Axial $\geq 27N$		
材料特性	参数	Material Data	Data		
连接器零件	材料	电镀	Connector Part	Material	Finish
外导体	黄铜	镀金 / 镀镍 / 镀三元合金	Body	Brass	Gold Plated/Nickel Plated/ White Bronze Plated
连接螺母	黄铜	镀镍 / 镀三元合金	Coupling Nut	Brass	Nickel Plated/White Bronze Plated
内导体	黄铜 / 磷 铜 / 铍铜	镀金 / 镀银	Center Contact	Brass/ Phosphor Bronze/Beryllium Copper	Gold Plated/Silver Plated
压接套管	紫铜 / 黄铜	镀金 / 镀镍 / 镀三元合金	Crimp Ferrule	Copper/Brass	Gold Plated/Nickel Plated / White Bronze Plated
绝缘体	PTFE		Insulator	PTFE	
垫圈	硅橡胶		Gasket or O-Ring	Silicone Rubber	
环境特性	参数	Environmental Data	Data		
温度范围	-45℃ ~+125℃	Temperature Range	-45℃ ~+125℃		
耐腐蚀性 (盐雾)	MIL-STD-202 method 101. Condition B	Corrosion (Salt Spray)	MIL-STD-202 method 101. Condition B		
振动	MIL-STD-202 method 204. Condition B	Vibration	MIL-STD-202 method 204. Condition B		
冲击	MIL-STD-202 method 213. Condition G	Shock	MIL-STD-202 method 213. Condition G		
热冲击	MIL-STD-202 method 107. Condition B	Thermal Shock	MIL-STD-202 method 107. Condition B		
抗潮湿性	MIL-STD-202 method 106	Moisture Resistance	MIL-STD-202 method 106		

注: 这些特性具有典型代表性, 不适用于所有连接器。

Note: These characteristics are typical and may not apply to all connectors.

射频同轴连接器

RF COAXIAL CONNECTORS



BNC

产品特点

- 频率可达到 4 GHz;
- VSWR (直式): ≤ 1.20 ;
- 卡扣式连接结构;
- 50 Ω 和 75 Ω 系列界面完全兼容。

Product Features

- Frequency range optimum up to 4 GHz;
- VSWR (straight connector): ≤ 1.20 ;
- Bayonet coupling mechanism;
- Intermatedable with 50 Ω and 75 Ω , to ensure nondestructive mating.

应用范围

- 基站;
- 天线;
- 汽车电子;
- 医疗设备;
- 测试仪器;
- 视频通讯;
- 军用无线电通信;
- 航天航空;
- 网络分析仪;
- 电信系统。

Application

- Base Station;
- Antenna;
- Automotive;
- Medical Equipment;
- Instrumentation;
- Video communication;
- Military radio-telecommunication;
- Avionics/ Aeronautics;
- Network Analyzer;
- Telecom.

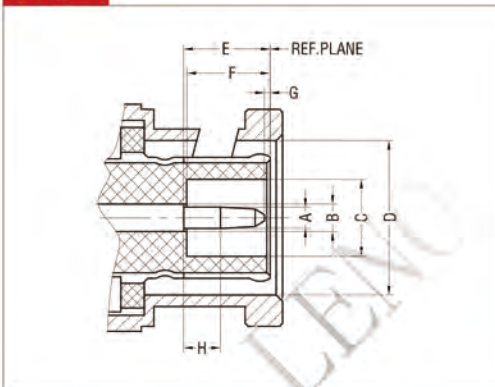
介面尺寸

标准: IEC60169-8 / MIL-STD-348A

Interface Dimension

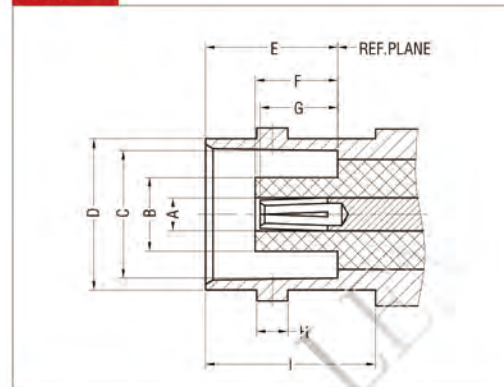
Standard: IEC60169-8 / MIL-STD-348A

Plug



NO.	DIMENSION	
	mm	Inch
A	1.32-1.37	0.052-0.054
B	2.06-2.21	0.081-0.087
C	4.83 Min.	0.190 Min.
D	9.78-9.91	0.385-0.390
E	5.33-5.84	0.210-0.230
F	5.28-5.79	0.208-0.228
G	0.15 Min.	0.006 Min.
H	1.98 Min.	0.078 Min.

Jack



NO.	DIMENSION	
	mm	Inch
A	2.06-2.21	0.081-0.087
B	4.72 Max.	0.186 Max.
C	8.10-8.15	0.319-0.321
D	9.60-9.70	0.378-0.382
E	8.31-8.51	0.327-0.335
F	4.78-5.28	0.188-0.208
G	4.72-5.23	0.186-0.206
H	1.91-2.06	0.075-0.081
I	10.52 Min.	0.414 Min.

技术参数

Technical Specification

电气性能	参数	Electrical Data	Data		
阻抗	50 Ω	Impedance	50 Ω		
频段范围	DC-4GHz	Frequency Range	DC-4GHz		
电压驻波比 (f=GHz)	≤ 1.1+0.02x f	VSWR(f=GHz)	≤ 1.1+0.02x f		
插入损耗 (f=GHz)	≤ 0.1x √ f dB	Insertion loss(f=GHz)	≤ 0.1x √ f dB		
测试电压	1500V rms	Test Voltage	1500V rms		
工作电压	400V rms	Work Voltage	400V rms		
绝缘阻抗	≥ 5000M Ω	Insulation Resistance	≥ 5000M Ω		
接触电阻	内导体 : 1.5 m Ω Max; 外导体 : 1.0 m Ω Max.	Contact Resistance	Center Contact: 1.5 m Ω Max; Outer Contact: 1.0 m Ω Max.		
机械性能	参数	Mechanical Data	Data		
插拔次数	≥ 500	Mating Cycles	≥ 500		
插入力	≤ 20N	Engagement Force	≤ 20N		
连接螺母保持力	≥ 445N	Coupling Nut Retention	≥ 445N		
内导体保持力	轴向 ≥ 27N	Center Contact Captivation	Axial ≥ 27N		
材料特性	参数	Material Data	Data		
连接器零件	材料	电镀	Connector Part	Material	Finish
外导体	黄铜	镀金 / 镀镍	Body	Brass	Gold Plated/ Nickel Plated
连接螺母	黄铜	镀镍	Coupling Nut	Brass	Nickel Plated
内导体	黄铜 / 磷铜 / 铍铜	镀金 / 镀银	Center Contact	Brass/ Phosphor Bronze/Beryllium Copper	Gold Plated/ Silver Plated
压接套管	紫铜 / 黄铜	镀金 / 镀镍	Crimp Ferrule	Copper/Brass	Gold Plated/ Nickel Plated
绝缘体	PTFE		Insulator	PTFE	
垫圈	硅橡胶		Gasket or O-Ring	Silicone Rubber	
环境特性	参数	Environmental Data	Data		
温度范围	-45℃ ~+125℃	Temperature Range	-45℃ ~+125℃		
耐腐蚀性 (盐雾)	MIL-STD-202 method 101. Condition B	Corrosion (Salt Spray)	MIL-STD-202 method 101. Condition B		
振动	MIL-STD-202 method 204. Condition B	Vibration	MIL-STD-202 method 204. Condition B		
冲击	MIL-STD-202 method 213. Condition G	Shock	MIL-STD-202 method 213. Condition G		
热冲击	MIL-STD-202 method 107. Condition B	Thermal Shock	MIL-STD-202 method 107. Condition B		
抗潮湿性	MIL-STD-202 method 106	Moisture Resistance	MIL-STD-202 method 106		

注：这些特性具有典型代表性，不适用于所有连接器。

Note: These characteristics are typical and may not apply to all connectors.

射频同轴连接器

RF COAXIAL CONNECTORS



BMA

产品特点

- 频率可达到 18 GHz;
- 驻波比 (直式) : ≤ 1.10 ;
- 盲插系列连接器;
- 具有轴向或径向偏差的固定及浮动连接方式;
- 高可靠性且易于安装。

Product Features

- Frequency range up to 18 GHz;
- VSWR (straight connector): ≤ 1.10 ;
- Blind mate connector;
- Floating connections with certain axial or radial misalignment;
- High reliability and ease of assembly;

应用范围

- 基站;
- 电缆组件;
- 电子元件;
- 测试仪器;
- 无线通信;
- 计算机 / 局域网;
- 视频系统;
- 电信系统。

Application

- Base Station;
- Cable Assemblies;
- Components;
- Instrumentation;
- Wireless Communication;
- PC/LAN;
- Video System;
- Telecom.

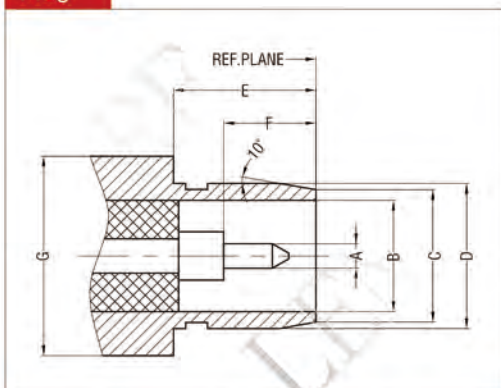
介面尺寸

标准: IEC61169-33 / MIL-STD-348A

Interface Dimension

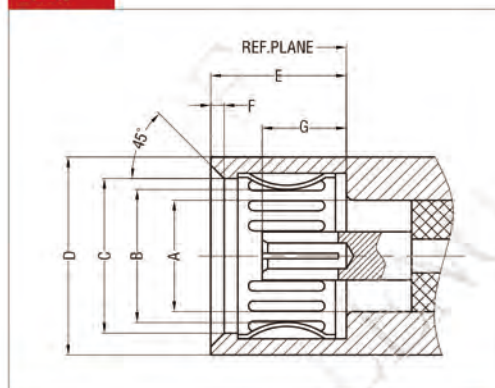
Standard: IEC61169-33 / MIL-STD-348A

Plug



NO.	DIMENSION	
	mm	Inch
A	0.90-0.94	0.0355-0.0370
B	4.09 Nom.	0.161 Nom.
C	4.88 Nom.	0.192 Nom.
D	5.30-5.35	0.209-0.211
E	5.03 Min.	0.198 Min.
F	3.25 Min.	0.128 Min.
G	7.62 Nom.	0.300 Nom.

Jack



NO.	DIMENSION	
	mm	Inch
A	4.09 Nom.	0.161 Nom.
B	5.08 Max.	0.200 Nom.
C	5.71 Min.	0.225 Min.
D	7.37 Min.	0.290 Min.
E	4.95 Max.	0.195 Max.
F	0.38-0.51	0.015-0.020
G	3.22 Max.	0.127 Max.

技术参数

Technical Specification

电气性能	参数		Electrical Data	Data	
阻抗	50 Ω		Impedance	50 Ω	
频段范围	DC-18GHz		Frequency Range	DC-18GHz	
电压驻波比 (f=GHz)	≤ 1.1+0.02x f		VSWR(f=GHz)	≤ 1.1+0.02x f	
插入损耗 (f=GHz)	≤ 0.04x √ f dB		Insertion loss(f=GHz)	≤ 0.04x √ f dB	
测试电压	750V rms		Test Voltage	750V rms	
工作电压	250V rms		Work Voltage	250V rms	
绝缘阻抗	≥ 5000M Ω		Insulation Resistance	≥ 5000M Ω	
接触电阻	内导体 : 2.0 m Ω Max; 外导体 : 2.0 m Ω Max.		Contact Resistance	Center Contact: 2.0 m Ω Max; Outer Contact: 2.0 m Ω Max.	
机械性能	参数		Mechanical Data	Data	
插拔次数	≥ 500		Mating Cycles	≥ 500	
啮合力	≤ 13.3N		Engagement Force	≤ 13.3N	
分离力	≥ 2N		Disengagement Force	≥ 2N	
内导体保持力	轴向 ≥ 27N		Center Contact Captivation	Axial ≥ 27N	
材料特性	参数		Material Data	Data	
连接器零件	材料	电镀	Connector Part	Material	Finish
外导体	黄铜 / 不锈钢	镀金 / 镀镍 / 镀三元合金 / 钝化	Body	Brass/Stainless Steel	Gold Plated/Nickel Plated/White Bronze Plated/Passivation
弹片	铍铜	镀金	Spring	Beryllium Copper	Gold Plated
内导体	黄铜 / 磷铜 / 铍铜	镀金 / 镀银	Center Contact	Brass/Phosphor Bronze/Beryllium Copper	Gold Plated / Silver Plated
压接套管	紫铜 / 黄铜	镀金 / 镀镍	Crimp Ferrule	Copper/Brass	Gold Plated / Nickel Plated
绝缘体	PTFE		Insulator	PTFE	
垫圈	硅橡胶		Gasket or O-Ring	Silicone Rubber	
环境特性	参数		Environmental Data	Data	
温度范围	-45℃ ~+125℃		Temperature Range	-45℃ ~+125℃	
耐腐蚀性 (盐雾)	MIL-STD-202 method 101. Condition B		Corrosion (Salt Spray)	MIL-STD-202 method 101. Condition B	
振动	MIL-STD-202 method 204. Condition D		Vibration	MIL-STD-202 method 204. Condition D	
冲击	MIL-STD-202 method 213. Condition I		Shock	MIL-STD-202 method 213. Condition I	
热冲击	MIL-STD-202 method 107. Condition B		Thermal Shock	MIL-STD-202 method 107. Condition B	
抗潮湿性	MIL-STD-202 method 106		Moisture Resistance	MIL-STD-202 method 106	

注：这些特性具有典型代表性，不适用于所有连接器。

Note: These characteristics are typical and may not apply to all connectors.

射频同轴连接器

RF COAXIAL CONNECTORS



F

产品特点

- 频率可达到 3 GHz;
- 驻波比 (直式) : ≤ 1.06 @1GHz ;
- 阻抗: 75 Ω ;
- 螺纹锁定连接系统;
- 多种 PCB 安装方式: 表面安装、边缘安装、弯式及直式;
- 提供 0.64~1.13 mm 的中心导体, 应用广泛。

Product Features

- Frequency range up to 3 GHz;
- VSWR (straight connector): ≤ 1.06 @1GHz ;
- Impedance: 75 Ω ;
- Screw-lock coupling system;
- Multiple PCB mount packages: surface mount, edge mount, right angle and straight;
- Accommodates 0.64~1.13 mm center conductor sizes.

应用范围

- 电缆组件;
- 有线电视;
- 计算机集成制造系统;
- 高速线缆调制解调器;
- 数字视频变换盒。

Application

- Cable Assemblies;
- CATV;
- CIMs;
- High Speed Cable Modems;
- Set Top Boxes.

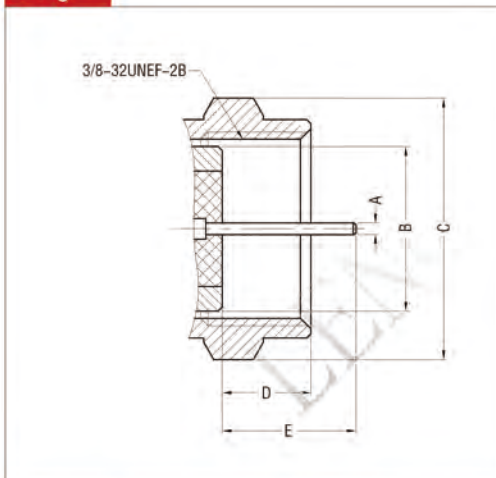
介面尺寸

标准: IEC61169-24

Interface Dimension

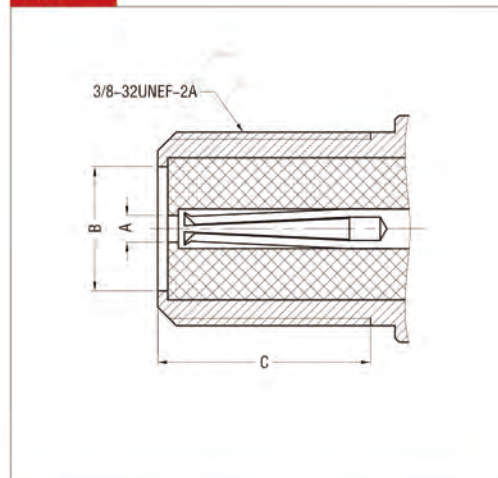
Standard: IEC61169-24

Plug



NO.	DIMENSION	
	mm	Inch
A	0.64~1.13	0.025~0.044
B	7.88 Min.	0.310 Min.
C	16.61 Max.	0.654 Max.
D	4.00~7.29	0.157~0.287
E	6.35~8.63	0.250~0.340

Jack



NO.	DIMENSION	
	mm	Inch
A	1.20~1.50	0.047~0.059
B	3.90~7.40	0.154~0.291
C	7.50 Min.	0.295 Min.

技术参数

Technical Specification

电气性能	参数		Electrical Data	Data	
阻抗	75 Ω		Impedance	75 Ω	
频段范围	DC-3GHz		Frequency Range	DC-3GHz	
电压驻波比	≤ 1.06@DC-1GHz ≤ 1.12@ 1-2GHz ≤ 1.22@ 2-3GHz		VSWR	≤ 1.06@DC-1GHz ≤ 1.12@ 1-2GHz ≤ 1.22@ 2-3GHz	
插入损耗	≤ 0.1dB@DC-1GHz ≤ 0.2dB@ 1-2GHz ≤ 0.3dB@ 2-3GHz		Insertion loss	≤ 0.1dB@DC-1GHz ≤ 0.2dB@ 1-2GHz ≤ 0.3dB@ 2-3GHz	
测试电压	750V rms		Test Voltage	750V rms	
工作电压	250V rms		Work Voltage	250V rms	
绝缘阻抗	≥ 1000M Ω		Insulation Resistance	≥ 1000M Ω	
接触电阻	内导体 : 5.0 m Ω Max; 外导体 : 2.5 m Ω Max.		Contact Resistance	Center Contact: 5.0 m Ω Max; Outer Contact: 2.5 m Ω Max.	
机械性能	参数		Mechanical Data	Data	
插拔次数	≥ 500		Mating Cycles	≥ 500	
连接力矩	2.8Nm Max; 建议: 0.46~0.69Nm		Coupling Torque	2.8Nm Max; Rec. 0.46~0.69Nm	
连接螺母保持力	≥ 300N		Coupling Nut Retention	≥ 300N	
内导体保持力	轴向 ≥ 20N		Center Contact Captivation	Axial ≥ 20N	
材料特性	参数		Material Data	Data	
连接器零件	材料	电镀	Connector Part	Material	Finish
外导体	黄铜 / 锌合金	镀金 / 镀镍 / 镀锡	Body	Brass/ Zinc Die Cast	Gold Plated/Nickel Plated/Tin Plated
连接螺母	黄铜	镀镍	Coupling Nut	Brass	Nickel Plated
内导体	黄铜 / 磷铜 / 铍铜	镀金 / 镀银 / 镀锡	Center Contact	Brass/Phosphor Bronze/Beryllium Copper	Gold Plated/Silver Plated/Tin Plated
压接套管	紫铜 / 黄铜	镀金 / 镀镍	Crimp Ferrule	Copper/Brass	Gold Plated/ Nickel Plated
绝缘体	PTFE		Insulator	PTFE	
垫圈	硅橡胶		Gasket or O-Ring	Silicone Rubber	
环境特性	参数		Environmental Data	Data	
温度范围	-45℃ ~+125℃		Temperature Range	-45℃ ~+125℃	
耐腐蚀性 (盐雾)	MIL-STD-202 method 101. Condition B		Corrosion (Salt Spray)	MIL-STD-202 method 101. Condition B	
振动	MIL-STD-202 method 204. Condition B		Vibration	MIL-STD-202 method 204. Condition B	
冲击	MIL-STD-202 method 213. Condition G		Shock	MIL-STD-202 method 213. Condition G	
热冲击	MIL-STD-202 method 107. Condition B		Thermal Shock	MIL-STD-202 method 107. Condition B	
抗潮湿性	MIL-STD-202 method 106		Moisture Resistance	MIL-STD-202 method 106	

注: 这些特性具有典型代表性, 不适用于所有连接器。

Note: These characteristics are typical and may not apply to all connectors.

技术参数

Technical Specification

电气性能	参数	Electrical Data	Data		
阻抗	50 Ω	Impedance	50 Ω		
频段范围	DC-6 GHz	Frequency Range	DC-6 GHz		
电压驻波比	≤ 1.30	VSWR	≤ 1.30		
插入损耗 (f=GHz)	≤ 0.1x √ f dB	Insertion loss(f=GHz)	≤ 0.1x √ f dB		
测试电压	750V rms	Test Voltage	750V rms		
工作电压	335V rms	Work Voltage	335V rms		
绝缘阻抗	≥ 1000MΩ	Insulation Resistance	≥ 1000MΩ		
接触电阻	内导体 : 5.0 mΩ Max; 外导体 : 2.5 mΩ Max.	Contact Resistance	Center Contact: 5.0 mΩ Max; Outer Contact: 2.5 mΩ Max.		
接触电流	1 A DC	Contact Current	1 A DC		
机械性能	参数	Mechanical Data	Data		
插拔次数	≥ 25	Mating Cycles	≥ 25		
啮合力	≤ 25N	Engagement Force	≤ 25N		
分离力	≥ 2N	Disengagement Force	≥ 2N		
机械拉力测试	≥ 110N	Mechanical pull test	≥ 110N		
线缆保持力	≥ 80N	Cable retention force	≥ 80N		
材料特性	参数	Material Data	Data		
连接器零件	材料	电镀	Connector Part	Material	Finish
外导体	黄铜 / 锌合金 / 不锈钢	镀金 / 镀镍 / 镀锡 / 钝化	Body	Brass/Zinc Die Cast/Stainless Steel	Gold Plated/ Nickel Plated/ Tin Plated/ Passivation
内导体	黄铜 / 磷铜 / 铍铜	镀金	Center Contact	Brass/Phosphor Bronze/Beryllium Copper	Gold Plated
压接套管	紫铜 / 黄铜	镀金 / 镀镍	Crimp Ferrule	Copper/Brass	Gold Plated/ Nickel Plated
绝缘体	PTFE		Insulator	PTFE	
塑胶外壳	PBT, PA PPE, POM		Plastic Housings	PBT, PA PPE, POM	
锁扣	PBT, PA, PPE		Secondary Lock	PBT, PA, PPE	
垫圈	硅橡胶		Gasket or O-Ring	Silicone Rubber	
环境特性	参数	Environmental Data	Data		
温度范围	-40℃ ~+105℃	Temperature Range	-40℃ ~+105℃		
振动	DIN 72594-2 Clause 6,1	Vibration	DIN 72594-2 Clause 6,1		
热冲击	DIN 72594-2 Clause 6,2	Thermal Shock	DIN 72594-2 Clause 6,2		
湿热	DIN 72594-2 Clause 6,3	Damp heat	DIN 72594-2 Clause 6,3		
干热	DIN 72594-2 Clause 6,5	Dry heat	DIN 72594-2 Clause 6,5		
抗潮湿性	MIL-STD-202 method 106	Moisture Resistance	MIL-STD-202 method 106		

注：这些特性具有典型代表性，不适用于所有连接器。

Note: These characteristics are typical and may not apply to all connectors.

射频同轴连接器

RF COAXIAL CONNECTORS



N

产品特点

- 频率可达 11GHz;
- VSWR(直式): ≤ 1.10 ;
- 螺纹锁定式连接系统;
- 高防护等级, 防风雨;
- 优质的三阶互调和回损。

Product Features

- Frequency range up to 11GHz;
- VSWR(straight connector): ≤ 1.10 ;
- Screw lock coupling system;
- High degree of protection, weatherproof;
- Excellent intermodulation and return loss.

应用范围

- 基站;
- 电缆组件;
- 电子元件;
- 天线;
- 测试仪器;
- 雷达;
- 民用和军用无线电通信设备;
- 工业应用;
- 电信系统。

Application

- Base Station;
- Cable Assemblies;
- Components;
- Antennas;
- Instrumentation ;
- Radar;
- Civil and military radio-telecommunication equipment;
- Industrial application;
- Telecom.

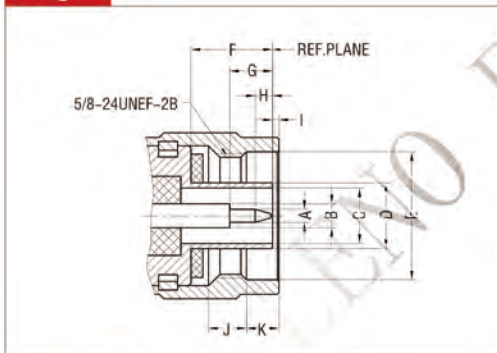
介面尺寸

标准: IEC 61169-16 / MIL-STD-348A

Interface Dimension

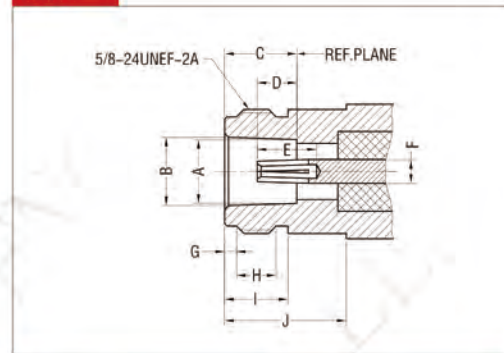
Standard: IEC 61169-16 / MIL-STD-348A

Plug



NO.	DIMENSION	
	mm	Inch
A	1.600~1.676	0.063~0.066
B	3.04 Nom.	0.120 Nom.
C	7.00 Nom.	0.2756 Nom.
D	8.027 Max.	0.316 Max.
E	16.00 Min.	0.630 Min.
F	9.25 Min.	0.364 Min.
G	5.33 Min.	0.210 Min.
H	2.79~3.56	0.110~0.140
I	0.41~1.52	0.016~0.060
J	4.50 Min.	0.177 Min.
K	4.013~4.267	0.158~0.168

Jack



NO.	DIMENSION	
	mm	Inch
A	8.027~8.130	0.316~0.320
B	8.53~8.74	0.336~0.344
C	9.05~9.19	0.356~0.362
D	4.75~5.26	0.187~0.207
E	5.33 Min.	0.210 Min.
F	3.04 Nom.	0.120 Nom.
G	1.19~1.96	0.047~0.077
H	4.37 Min.	0.172 Min.
I	6.76 Min.	0.266 Min.
J	10.72 Min.	0.422 Min.

技术参数

Technical Specification

电气性能	参数	Electrical Data	Data
阻抗	50 Ω	Impedance	50 Ω
频段范围	DC-11GHz	Frequency Range	DC-11GHz
电压驻波比	≤ 1.10	VSWR	≤ 1.10
插入损耗 (f=GHz)	≤ 0.05x √ f dB	Insertion loss(f=GHz)	≤ 0.05x √ f dB
测试电压	2500V rms	Test Voltage	2500V rms
工作电压	1000V rms	Work Voltage	1000V rms
绝缘阻抗	≥ 5000MΩ	Insulation Resistance	≥ 5000MΩ
接触电阻	内导体 : 1.5 mΩ Max; 外导体 : 1.0 mΩ Max.	Contact Resistance	Center Contact: 1.5 mΩ Max; Outer Contact: 1.0 mΩ Max.
射频泄漏	≥ 90 dB	Rf-Leakage	≥ 90 dB
三阶互调	≤ -155 dBc@2x20W	PIM 3rd	≤ -155 dBc@2x20W
机械性能	参数	Mechanical Data	Data
插拔次数	≥ 500	Mating Cycles	≥ 500
连接力矩	1.7Nm Max; 建议: 0.7-1.1Nm	Coupling Torque	1.7Nm Max; Rec. 0.7-1.1Nm
连接螺母保持力	≥ 450N	Coupling Nut Retention	≥ 450N
内导体保持力	轴向 ≥ 28N 径向 ≥ 0.1Nm	Center Contact Captivation	axial ≥ 28N radial ≥ 0.1Nm
材料特性	参数	Material Data	Data
外导体	黄铜 镀银 / 镀镍 / 镀三元合金	Body	Brass Silver Plated/Nickel Plated/ White Bronze Plated
连接螺母	黄铜 镀镍 / 镀三 元合金	Coupling Nut	Brass Nickel Plated/White Bronze Plated
内导体	黄铜 / 磷铜 / 镀铜 镀金 / 镀银	Center Contact	Brass/Phosphor Bronze/Beryllium Copper Gold Plated/ Silver Plated
压接套管	紫铜 / 黄铜 镀银 / 镀镍 / 镀三元合金	Crimp Ferrule	Copper/Brass Silver Plated/Nickel Plated/ White Bronze Plated
绝缘体	PTFE	Insulator	PTFE
垫圈	硅橡胶	Gasket or O-Ring	Silicone Rubber
环境特性	参数	Environmental Data	Data
温度范围	-55℃ ~+155℃	Temperature Range	-55℃ ~+155℃
耐腐蚀性 (盐雾)	MIL-STD-202 method 101. Condition B	Corrosion (Salt Spray)	MIL-STD-202 method 101. Condition B
振动	MIL-STD-202 method 204. Condition B	Vibration	MIL-STD-202 method 204. Condition B
冲击	MIL-STD-202 method 213. Condition G	Shock	MIL-STD-202 method 213. Condition G
热冲击	MIL-STD-202 method 107. Condition B	Thermal Shock	MIL-STD-202 method 107. Condition B

注：这些特性具有典型代表性，不适用于所有连接器。

Note: These characteristics are typical and may not apply to all connectors.

射频同轴连接器

RF COAXIAL CONNECTORS



DIN(7/16)

产品特点

- 频率可达 7.5GHz;
- VSWR(直式): ≤ 1.15 @4GHz;
- 螺纹连接方式;
- 高等级防护及防水;
- 低衰减及低互调。

Product Features

- Frequency range up to 7.5GHz;
- VSWR(straight connector): ≤ 1.15 @ 4GHz;
- Screw lock coupling system;
- High degree of protection , Waterproof;
- Low attenuation and low PIM.

应用范围

- 基站;
- 电缆组件;
- 电子元件;
- 天线;
- 无线电连接;
- 移动通信基础设施网络。

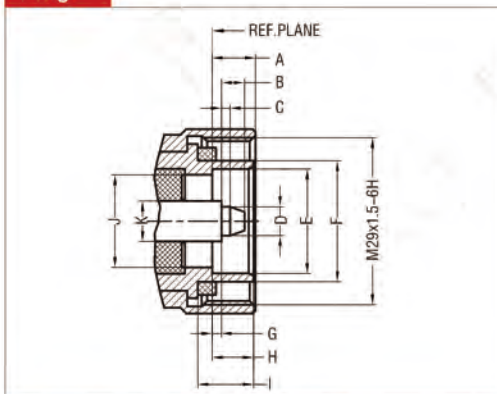
Application

- Base Station;
- Cable Assemblies;
- Components;
- Antennas;
- Radio Links;
- Mobile Communication Infrastructure Network.

介面尺寸

标准: IEC 61169-4

Plug

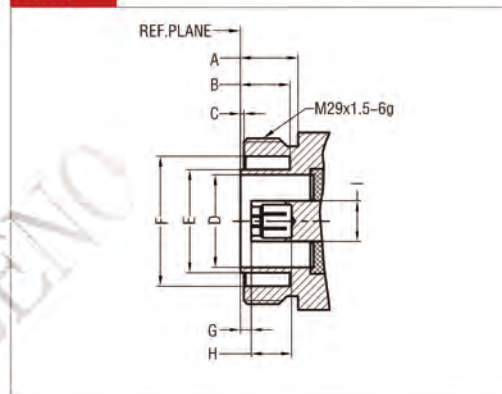


NO.	DIMENSION	
	mm	Inch
A	7.00-9.00	0.276-0.354
B	4.5 Max.	0.177 Max.
C	1.40-1.60	0.0551-0.0630
D	4.96-5.04	0.1953-0.1984
E	18.03-18.21	0.7098-0.7169
F	20.60-21.40	0.811-0.843
G	1.47-1.77	0.0579-0.0697
H	7.00-8.00	0.276-0.315
I	9.00 Ref.	0.354 Ref.
J	15.85-16.25	0.6240-0.6398
K	7.00 Nom.	0.276 Nom.

Interface Dimension

Standard: IEC 61169-4

Jack



NO.	DIMENSION	
	mm	Inch
A	10.00 Min.	0.394 Min.
B	8.1 Min.	0.319 Min.
C	0.50-0.70	0.0197-0.0276
D	15.85-16.25	0.6240-0.6398
E	17.84-18.02	0.7024-0.7094
F	22.10-22.90	0.870-0.902
G	1.77-2.07	0.0697-0.0815
H	5.0 Min.	0.197 Min.
I	7.00 Nom.	0.276 Nom.

技术参数

Technical Specification

电气性能	参数	Electrical Data	Data		
阻抗	50 Ω	Impedance	50 Ω		
频段范围	DC-7.5GHz	Frequency Range	DC-7.5GHz		
电压驻波比	≤ 1.05@DC-0.5GHz ≤ 1.15@ 0.5-4GHz ≤ 1.30@ 4-7.5GHz	VSWR	≤ 1.05@DC-0.5GHz ≤ 1.15@ 0.5-4GHz ≤ 1.30@ 4-7.5GHz		
插入损耗 (f=GHz)	≤ 0.05x √ f dB	Insertion loss(f=GHz)	≤ 0.05x √ f dB		
测试电压	4000V rms	Test Voltage	4000V rms		
工作电压	2700V rms	Work Voltage	2700V rms		
绝缘阻抗	≥ 10000M Ω	Insulation Resistance	≥ 10000M Ω		
接触电阻	内导体 : 0.4 m Ω Max; 外导体 : 1.5 m Ω Max.	Contact Resistance	Center Contact: 0.4 m Ω Max; Outer Contact: 1.5 m Ω Max.		
射频泄漏	≥ 128 dB@DC-1GHz	Rf-Leakage	≥ 128 dB@DC-1GHz		
三阶互调	≤ -160 dBc@2x20W	PIM 3rd	≤ -160 dBc@2x20W		
机械性能	参数	Mechanical Data	Data		
插拔次数	≥ 500	Mating Cycles	≥ 500		
连接力矩	35Nm Max; 建议: 25-30Nm	Coupling Torque	35Nm Max; Rec. 25-30Nm		
连接螺母保持力	≥ 1000N	Coupling Nut Retention	≥ 1000N		
内导体保持力	轴向 ≥ 200N 径向 ≥ 0.2Nm	Center Contact Captivation	axial ≥ 200N radial ≥ 0.2Nm		
材料特性	参数	Material Data	Data		
连接器零件	材料	电镀	Connector Part	Material	Finish
外导体	黄铜	镀银/ 镀三元合金	Body	Brass	Silver Plated/ White Bronze Plated
连接螺母	黄铜	镀镍/ 镀三元合金	Coupling Nut	Brass	Nickel Plated/ White Bronze Plated
内导体	黄铜/磷铜/ 铍铜	镀金/镀银	Center Contact	Brass/Phosphor Bronze/ Beryllium Copper	Gold Plated/Silver Plated
压接套管	紫铜/黄铜	镀银/ 镀三元合金	Crimp Ferrule	Copper/Brass	Silver Plated/ White Bronze Plated
绝缘体	PTFE		Insulator	PTFE	
垫圈	硅橡胶		Gasket or O-Ring	Silicone Rubber	
环境特性	参数	Environmental Data	Data		
温度范围	-55℃ ~155℃	Temperature Range	-55℃ ~155℃		
耐腐蚀性 (盐雾)	MIL-STD-202 method 101. Condition B	Corrosion (Salt Spray)	MIL-STD-202 method 101. Condition B		
振动	MIL-STD-202 method 204. Condition B	Vibration	MIL-STD-202 method 204. Condition B		
冲击	MIL-STD-202 method 213. Condition G	Shock	MIL-STD-202 method 213. Condition G		

注：这些特性具有典型代表性，不适用于所有连接器。

Note: These characteristics are typical and may not apply to all connectors.

射频同轴连接器

RF COAXIAL CONNECTORS



1.0-2.3

产品特点

- 频率可达 10GHz;
- VSWR(直式): ≤ 1.23 ;
- 优良稳定的机械和电气特性;
- 1.0-2.3 拉拔式结构提供了安全的连接;
- 高传输速率;
- 紧凑型设计节约空间。

Product Features

- Frequency range up to 10GHz;
- VSWR(straight connector): ≤ 1.23 ;
- High mechanical and electrical stability.
- 1.0-2.3 Push-Pull offers safe coupling.
- Transmission of high bit-rates;
- Compact design to reduce space.

应用范围

- 基站;
- 电缆组件;
- 电子元件;
- 路由器;
- 开关设备;
- 电信系统。

Application

- Base Station;
- Cable Assemblies;
- Components;
- Routers;
- Switching Equipment;
- Telecom.

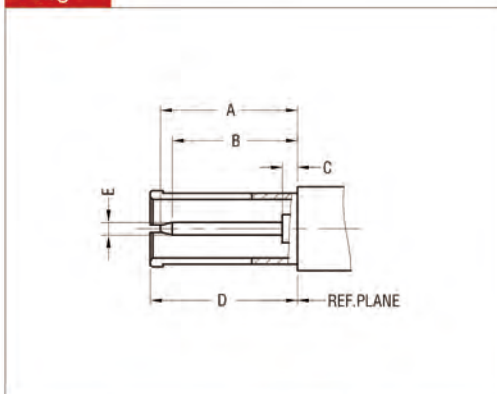
介面尺寸

标准: DIN 47297 / CECC 22230

Interface Dimension

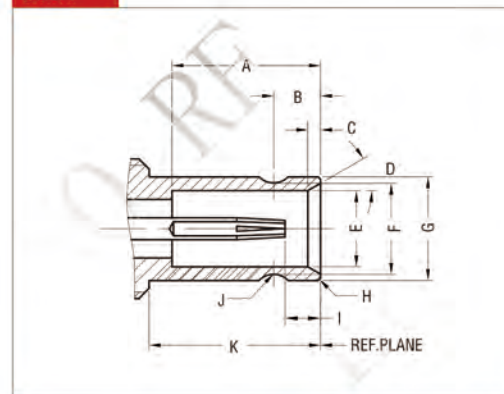
Standard: DIN 47297 / CECC 22230

Plug



NO.	DIMENSION	
	mm	Inch
A	5.50 Max.	0.217 Max.
B	4.50 Min.	0.177 Min.
C	1.15 Max.	0.045 Max.
D	5.40-5.70	0.212-0.224
E	0.475-0.520	0.0187-0.0205

Jack



NO.	DIMENSION	
	mm	Inch
A	5.80-5.90	0.228-0.232
B	1.80-1.90	0.071-0.075
C	0.50-0.60	0.020-0.024
D	28°-32°	28°-32°
E	3.00-3.06	0.1181-0.1204
F	3.53-3.60	0.139-0.142
G	4.03-4.15	0.159-0.163
H	R0.30 Max.	R0.012 Max.
I	1.15-1.70	0.045-0.067
J	R0.80 Nom.	R0.031 Nom.
K	6.40-6.50	0.252-0.256

技术参数

Technical Specification

电气性能	参数	Electrical Data	Data		
阻抗	50 Ω	Impedance	50 Ω		
频段范围	DC-10GHz	Frequency Range	DC-10GHz		
电压驻波比	≤ 1.05@DC-1GHz ≤ 1.15@ 1-4GHz ≤ 1.37@ 4-10GHz	VSWR	≤ 1.05@DC-1GHz ≤ 1.15@ 1-4GHz ≤ 1.37@ 4-10GHz		
插入损耗 (f=GHz)	≤ 0.1x √ f dB	Insertion loss(f=GHz)	≤ 0.1x √ f dB		
测试电压	750V rms	Test Voltage	750V rms		
工作电压	250V rms	Work Voltage	250V rms		
绝缘阻抗	≥ 1000M Ω	Insulation Resistance	≥ 1000M Ω		
接触电阻	内导体 : 4.0 m Ω Max; 外导体 : 2.5 m Ω Max.	Contact Resistance	Center Contact: 4.0 m Ω Max; Outer Contact: 2.5 m Ω Max.		
射频泄漏	≥ 90 dB	Rf-Leakage	≥ 90 dB		
机械性能	参数	Mechanical Data	Data		
插拔次数	≥ 500	Mating Cycles	≥ 500		
内导体保持力	≥ 10N	Center Contact Captivation	≥ 10N		
啮合力和分离力	0.9N-10N	Engaging and disengaging force	0.9N-10N		
材料特性	参数	Material Data	Data		
连接器零件	材料	电镀	Connector Part	Material	Finish
外导体	黄铜 / 铍铜	镀金 / 镀镍	Body	Brass/Beryllium Copper	Gold Plated/ Nickel Plated
连接螺母	黄铜	镀金 / 镀镍	Coupling Nut	Brass	Gold Plated/ Nickel Plated
内导体	黄铜 / 铍铜	镀金	Center Contact	Brass/Beryllium Copper	Gold Plated
压接套管	紫铜 / 黄铜	镀金 / 镀镍	Crimp Ferrule	Copper/Brass	Gold Plated/ Nickel Plated
绝缘体	PTFE		Insulator	PTFE	
垫圈	硅橡胶		Gasket or O-Ring	Silicone Rubber	
环境特性	参数	Environmental Data	Data		
温度范围	-45℃ ~+85℃	Temperature Range	-45℃ ~+85℃		
气候等级	IEC 60068-2-1 40/85/21 IEC 60068-2-2 IEC 60068-2-13	Climatic Class	IEC 60068-2-1 40/85/21 IEC 60068-2-2 IEC 60068-2-13		
振动	IEC 60068-2-6 @10Hz ~2000Hz,100m/s ²	Vibration	IEC 60068-2-6 @10Hz ~2000Hz,100m/s ²		

注：这些特性具有典型代表性，不适用于所有连接器。

Note: These characteristics are typical and may not apply to all connectors.

射频同轴连接器

RF COAXIAL CONNECTORS



4.3-10

产品特点

- 频率可达 12GHz;
- VSWR(直式): ≤ 1.15 @6GHz;
- 径向接触;
- 紧凑的尺寸 (25.4 mm 法兰);
- 重量比 7/16 轻 40%;
- 优良的三阶互调和回损;
- 多种耦合连接方式;
- 简化安装.

Product Features

- Frequency range up to 12GHz;
- VSWR(straight connector): ≤ 1.15 @6GHz;
- Radial contact;
- Compact size(25.4mm flange);
- 40% lower weight than 7/16;
- Excellent PIM and Return loss;
- Multiple coupling options;
- Ease of installation.

应用范围

- 基站;
- 电缆组件;
- 电子元件;
- 天线;
- 过程控制系统;
- 电信系统.

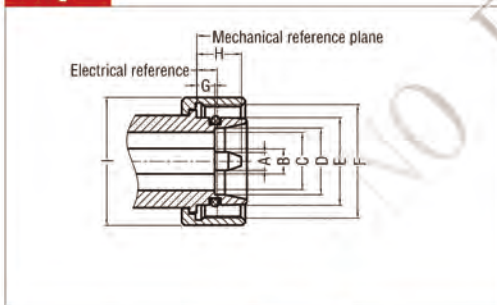
Application

- Base Station;
- Cable Assemblies;
- Components;
- Antennas;
- Process Controls;
- Telecom.

介面尺寸

标准: IEC 61169-54

Plug

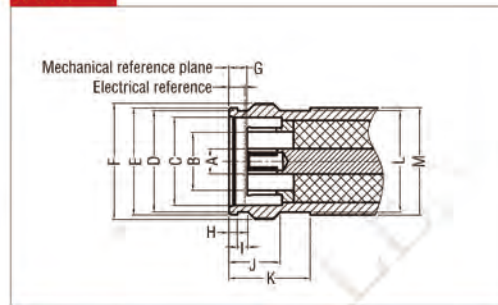


NO.	DIMENSION	
	mm	Inch
A	3.07-3.13	0.1208-0.1232
B	4.35 Nom.	0.171 Nom.
C	10.00 Nom.	0.394 Nom.
D	11.47-11.53	0.452-0.454
E	15.07-15.11	0.593-0.595
F	M20x1-6H	M20x1-6H
G	2.90 Max. (Center and Outer Contact)	0.114 Max. (Center and Outer Contact)
H	8.00 Max.	0.315 Max.
I	22.00 Nom.	0.866 Nom.

Interface Dimension

Standard: IEC 61169-54

Jack



NO.	DIMENSION	
	mm	Inch
A	4.35 Nom.	0.171 Nom.
B	10.00 Nom.	0.394 Nom.
C	15.13-15.19	0.596-0.598
D	17.40-17.50	0.685-0.689
E	18.44-18.50	0.726-0.728
F	M20x1-6g	M20x1-6g
G	3.10-3.50 (Center and Outer Contact)	0.122-0.138 (Center and Outer Contact)
H	1.44-1.50	0.057-0.059
I	1.70-1.90	0.067-0.075
J	8.70-8.90	0.343-0.350
K	13.90-14.10	0.547-0.555
L	17.45-17.55	0.687-0.691
M	18.60 Min.	0.732 Min.

技术参数

Technical Specification

电气性能	参数	Electrical Data	Data		
阻抗	50 Ω	Impedance	50 Ω		
频段范围	DC-12GHz	Frequency Range	DC-12GHz		
电压驻波比	≤ 1.08@DC-4GHz ≤ 1.15@ 4-6GHz	VSWR	≤ 1.08@DC-4GHz ≤ 1.15@ 4-6GHz		
插入损耗 (f=GHz)	≤ 0.05x √ f dB	Insertion loss(f=GHz)	≤ 0.05x √ f dB		
测试电压	2500V rms	Test Voltage	2500V rms		
工作电压	1000V rms	Work Voltage	1000V rms		
绝缘阻抗	≥ 5000MΩ	Insulation Resistance	≥ 5000MΩ		
接触电阻	内导体 : 1.0 mΩ Max; 外导体 : 1.0 mΩ Max.	Contact Resistance	Center Contact: 1.0 mΩ Max; Outer Contact: 1.0 mΩ Max.		
射频泄漏	≥ 110 dB(螺纹类型)	Rf-Leakage	≥ 110 dB(Screw type)		
三阶互调	≤ -165 dBc@2x20W	PIM 3rd	≤ -165 dBc@2x20W		
机械性能	参数	Mechanical Data	Data		
插拔次数	≥ 500	Mating Cycles	≥ 500		
连接力矩	5-8Nm	Coupling Torque	5-8Nm		
连接螺母保持力	≥ 450N	Coupling Nut Retention	≥ 450N		
内导体保持力	轴向 ≥ 30N 径向 ≥ 0.2Nm	Center Contact Captivation	axial ≥ 30N radial ≥ 0.2Nm		
材料特性	参数	Material Data	Data		
连接器零件	材料	电镀	Connector Part	Material	Finish
外导体	黄铜	镀银 / 镀三元合金	Body	Brass	Silver Plated/ White Bronze Plated
连接螺母	黄铜	镀镍 / 镀三元合金	Coupling Nut	Brass	Nickel Plated/ White Bronze Plated
内导体	黄铜 / 磷铜 / 铍铜	镀金 / 镀银	Center Contact	Brass/Phosphor Bronze/ Beryllium Copper	Gold Plated/ Silver Plated
压接套管	紫铜 / 黄铜	镀银 / 镀三元合金	Crimp Ferrule	Copper/Brass	Silver Plated/ White Bronze Plated
绝缘体	PTFE		Insulator	PTFE	
垫圈	硅橡胶		Gasket or O-Ring	Silicone Rubber	
环境特性	参数	Environmental Data	Data		
温度范围	-45℃ ~+125℃	Temperature Range	-45℃ ~+125℃		
耐腐蚀性 (盐雾)	MIL-STD-202 method 101. Condition B	Corrosion (Salt Spray)	MIL-STD-202 method 101. Condition B		
振动	MIL-STD-202 method 204. Condition B	Vibration	MIL-STD-202 method 204. Condition B		
冲击	MIL-STD-202 method 213. Condition G	Shock	MIL-STD-202 method 213. Condition G		
气候等级	IEC 60068 65/85/21 IEC 60068 65/165/21 PTFE Insulator	Climatic Class	IEC 60068 65/85/21 IEC 60068 65/165/21 PTFE Insulator		

注：这些特性具有典型代表性，不适用于所有连接器。

Note: These characteristics are typical and may not apply to all connectors.

射频同轴连接器

RF COAXIAL CONNECTORS



4.1-9.5

产品特点

- 频率可达 14GHz;
- VSWR(直式): ≤ 1.14 @4GHz
- 螺纹连接方式;
- 防气候变化;
- 低衰减及低互调。

Product Features

- Frequency range up to 14GHz;
- VSWR(straight connector): ≤ 1.14 @4GHz;
- Screw lock coupling system;
- Weather and climatic proof;
- Low attenuation and low PIM.

应用范围

- 基站;
- 电缆组件;
- 电子元件;
- 天线;
- 过程控制系统;
- 电信系统。

Application

- Base Station;
- Cable Assemblies;
- Components;
- Antennas;
- Process Controls;
- Telecom.

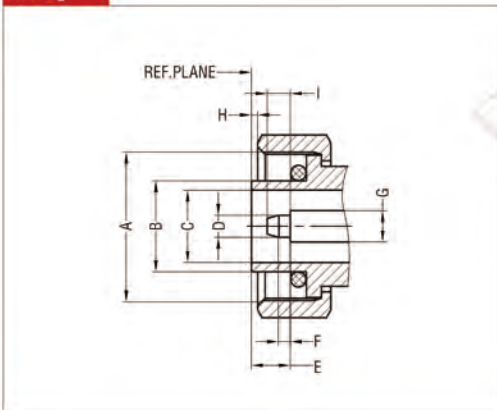
介面尺寸

标准: IEC 60169-11

Interface Dimension

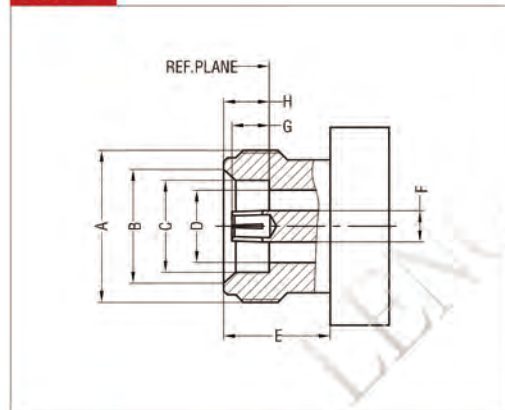
Standard: IEC 60169-11

Plug



NO.	DIMENSION	
	mm	inch
A	M20x1-6H	M20x1-6H
B	11.84-12.02	0.4661-0.4732
C	9.40-9.60	0.3701-0.3780
D	2.855-2.945	0.1124-0.1159
E	5.05-5.35	0.1988-0.2106
F	0.80-1.60	0.031-0.063
G	4.13 Nom.	0.1626 Nom.
H	0.00-1.00	0.000-0.039
I	2.00-4.00	0.079-0.157

Jack



NO.	DIMENSION	
	mm	inch
A	M20x1-6g	M20x1-6g
B	14.90-15.00	0.5866-0.5906
C	12.03-12.21	0.4736-0.4807
D	9.40-9.60	0.3701-0.3780
E	8.00 Min.	0.315 Min.
F	4.13 Nom.	0.1626 Nom.
G	4.73-5.03	0.1862-0.1980
H	5.80-6.20	0.2283-0.2441

技术参数

Technical Specification

电气性能	参数	Electrical Data	Data		
阻抗	50 Ω	Impedance	50 Ω		
频段范围	DC-14GHz	Frequency Range	DC-14GHz		
电压驻波比	≤ 1.06@DC-0.5GHz ≤ 1.14@ 0.5-4GHz ≤ 1.25@ 4-10GHz	VSWR	≤ 1.06@DC-0.5GHz ≤ 1.14@ 0.5-4GHz ≤ 1.25@ 4-10GHz		
插入损耗 (f=GHz)	≤ 0.05x √ f dB	Insertion loss(f=GHz)	≤ 0.05x √ f dB		
测试电压	1500V rms	Test Voltage	1500V rms		
工作电压	500V rms	Work Voltage	500V rms		
绝缘阻抗	≥ 5000MΩ	Insulation Resistance	≥ 5000MΩ		
接触电阻	内导体: 0.4 mΩ Max; 外导体: 1.5 mΩ Max.	Contact Resistance	Center Contact: 0.4 mΩ Max; Outer Contact: 1.5 mΩ Max.		
射频泄漏	≥ 100 dB	Rf-Leakage	≥ 100 dB		
三阶互调	≤ -155 dBc@2x20W	PIM 3rd	≤ -155 dBc@2x20W		
机械性能	参数	Mechanical Data	Data		
插拔次数	≥ 500	Mating Cycles	≥ 500		
连接力矩	17-22Nm	Coupling Torque	17-22Nm		
连接螺母保持力	≥ 450N	Coupling Nut Retention	≥ 450N		
内导体保持力	轴向 ≥ 80N 径向 ≥ 0.2Nm	Center Contact Captivation	axial ≥ 80N radial ≥ 0.2Nm		
材料特性	参数	Material Data	Data		
连接器零件	材料	电镀	Connector Part	Material	Finish
外导体	黄铜	镀银/ 镀三元合金	Body	Brass	Silver Plated/ White Bronze Plated
连接螺母	黄铜	镀镍/ 镀三元合金	Coupling Nut	Brass	Nickel Plated/ White Bronze Plated
内导体	黄铜/磷铜/ 铍铜	镀金/镀银	Center Contact	Brass/Phosphor Bronze/ Beryllium Copper	Gold Plated/ Silver Plated
压接套管	紫铜/黄铜	镀银/ 镀三元合金	Crimp Ferrule	Copper/Brass	Silver Plated/ White Bronze Plated
绝缘体	PTFE		Insulator	PTFE	
垫圈	硅橡胶		Gasket or O-Ring	Silicone Rubber	
环境特性	参数	Environmental Data	Data		
温度范围	-45℃ ~125℃	Temperature Range	-45℃ ~125℃		
耐腐蚀性 (盐雾)	MIL-STD-202 method 101. Condition B	Corrosion (Salt Spray)	MIL-STD-202 method 101. Condition B		
振动	MIL-STD-202 method 204. Condition B	Vibration	MIL-STD-202 method 204. Condition B		
冲击	MIL-STD-202 method 213. Condition G	Shock	MIL-STD-202 method 213. Condition G		
气候等级	IIEC 60068 65/85/21 IEC 60068 65/165/21 PTFE Insulator	Climatic Class	IEC 60068 65/85/21 IEC 60068 65/165/21 PTFE Insulator		

注：这些特性具有典型代表性，不适用于所有连接器。

Note: These characteristics are typical and may not apply to all connectors.

射频同轴连接器

RF COAXIAL CONNECTORS

NEX10

产品特点

- 频率可达到 20 GHz;
- 驻波比 (直式) : ≤ 1.05 ;
- 最优质的电气性能;
- 高品质标准;
- 高可靠性, 寿命周期长。

Product Features

- Frequency range up to 20 GHz;
- VSWR (straight connector): ≤ 1.05 ;
- Optimal electrical characteristics;
- High quality standard;
- High reliability and long life cycle.

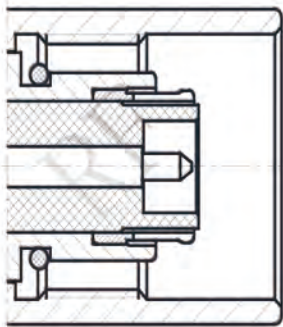
应用范围

- 基站;
- 移动通讯系统;
- 电子元件;
- 测试仪器;
- 军用 / 航空;
- 计算机 / 局域网;
- 过程控制系统;
- 电信。

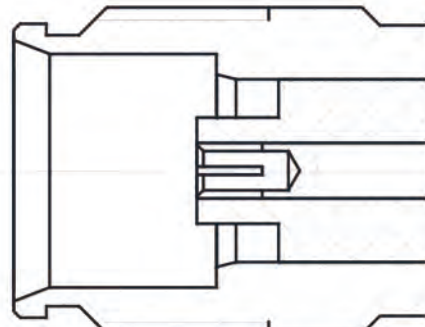
Application

- Base Station;
- Mobile communication;
- Components;
- Instrumentation;
- Military /Aeronautics;
- PC/LAN;
- Process Controls;
- Telecom.

Plug



Jack



技术参数

Technical Specification

电气性能	参数	Electrical Data	Data
阻抗	50 Ω	Impedance	50 Ω
频段范围	DC-20GHz	Frequency Range	DC-20GHz
电压驻波比(f=GHz)	1.02+0.02*f	VSWR	1.02+0.02*f
插入损耗(f=GHz)	$\leq 0.05 * \sqrt{f}$	Insertion loss(f=GHz)	$\leq 0.05 * \sqrt{f}$
测试电压	1500V rms	Test Voltage	1500V rms
工作电压	500V rms	Working Voltage	500V rms
绝缘阻抗	$\geq 5000M\Omega$	Insulation Resistance	$\geq 5000M\Omega$
接触电阻	内导体: 2 m Ω Max; 外导体: 1 m Ω Max.	Contact Resistance	Center Contact: 2 m Ω Max; Outer Contact: 1 m Ω Max.
三阶互调	≤ -123 dBc@2x20W	PIM 3rd	≤ -123 dBc@2x20W

机械性能	参数	Mechanical Data	Data
插拔次数	≥ 100	Mating Cycles	≥ 100

材料特性	参数		Material Data	Data	
连接器零件	材料	电镀	Connector Part	Material	Finish
外导体	黄铜/ 铍铜	镀三元合金 / 镀银	Body	Brass/ Beryllium Copper	Silver Plated/ White Bronze Plated
内导体	黄铜/ 磷铜 / 铍铜	镀银	Center Contact	Brass/Phosphor Bronze/Beryllium Copper	Silver Plated Copper
绝缘体	PTFE		Insulator	PTFE	
垫圈	硅橡胶		Gasket or O-Ring	Silicone Rubber	

环境特性	参数	Environmental Data	Data
温度范围	-55 $^{\circ}$ C ~+125 $^{\circ}$ C	Temperature Range	-55 $^{\circ}$ C ~+125 $^{\circ}$ C
耐腐蚀性(盐雾)	MIL-STD-202 method 101. Condition B	Corrosion (Salt Spray)	MIL-STD-202 method 101. Condition B
振动	MIL-STD-202 method 204. Condition D	Vibration	MIL-STD-202 method 204. Condition D
冲击	MIL-STD-202 method 213. Condition I	Shock	MIL-STD-202 method 213. Condition I
热冲击	MIL-STD-202 method 107. Condition B	Thermal Shock	MIL-STD-202 method 107. Condition B
抗潮湿性	MIL-STD-202 method 106	Moisture Resistance	MIL-STD-202 method 106

注: 这些特性具有典型代表性, 不适用于所有连接器。

Note: These characteristics are typical and may not apply to all connectors.

线缆组件

CABLE ASSEMBLY



线缆组件

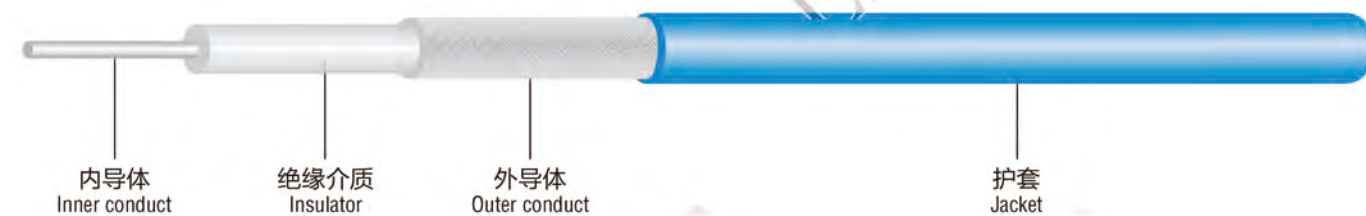
CABLE ASSEMBLIES

柔性、半柔及半刚线缆组件在最大相位和稳定振幅条件下，最小程度地减少反射和传输损失。

我们的线缆组件可以满足您的特殊要求。

flexible, semi-flexible and semi-rigid cable assemblies minimize reflection and transmission losses at maximum phase and stable amplitude.

Our cable assemblies meet your specific requirements.



柔性线缆组件

柔性线缆组件广泛应用于高达 18GHz 射频频段范围内；

Flexible Cable Assembly

Flexible RF Cable Assembly up to 18GHz for broad range of radio frequency applications

半柔线缆组件

半柔线缆组件应用于高达 26.5GHz 频率；

Semi-Flexible Cable Assembly

Semi-Flexible Cable Assembly up to 26.5GHz

半刚线缆组件

半刚线缆组件应用于高达 26.5GHz 频率。

Semi-Rigid Cable Assembly

Semi-Rigid Cable Assembly up to 26.5GHz

线缆选型指南

CABLE SELECTION GUIDE

PTFE 介质线缆

Solid PTFE Dielectric Cable

线缆类型 CABLE TYPE	阻抗 IMPEDANCE	频率范围 FREQUENCY RANGE	衰减 ATTENUATION (M)	线缆外径 CABLE O.D.	线缆保持力 CABLE RETENTION FORCE
RG178/U	50 Ω	3GHz	2.65dB	1.8 mm	3Kg.f
RG188/U	50 Ω	3GHz	1.53dB	2.7 mm	5Kg.f
RG316/U	50 Ω	3GHz	1.65dB	2.6 mm	5Kg.f
RG142/U	50 Ω	5GHz	1.05dB	5.0 mm	25Kg.f
RG400/U	50 Ω	5GHz	1.18dB	5.0 mm	25Kg.f
RG393/U	50 Ω	5GHz	0.64dB	10.0 mm	40Kg.f

PE 介质线缆

PE Dielectric Cable

线缆类型 CABLE TYPE	阻抗 IMPEDANCE	频率范围 FREQUENCY RANGE	衰减 ATTENUATION (M)	线缆外径 CABLE O.D.	线缆保持力 CABLE RETENTION FORCE
RG174/U	50 Ω	1GHz	0.90dB	2.6 mm	5Kg.f
RG58/U	50 Ω	1GHz	0.50dB	5.0 mm	25Kg.f
RG223/U	50 Ω	11GHz	1.78dB	5.0 mm	25Kg.f
RG214/U	50 Ω	11GHz	1.11dB	10.8 mm	40Kg.f
LMR100	50 Ω	5.8GHz	2.10dB	2.8 mm	5Kg.f
LMR195	50 Ω	5.8GHz	0.93dB	5.0 mm	20Kg.f
LMR200	50 Ω	5.8GHz	0.87dB	5.0 mm	20Kg.f
LMR240	50 Ω	5.8GHz	0.67dB	6.1 mm	25Kg.f
LMR400	50 Ω	5.8GHz	0.36dB	10.3 mm	40Kg.f
LMR600	50 Ω	5.8GHz	0.24dB	15.0 mm	100Kg.f
RG59/U	75 Ω	1GHz	0.27dB	6.1 mm	25Kg.f
RG6/U	75 Ω	1GHz	0.21dB	7.1 mm	25Kg.f

半柔线缆

Semi-Flexible CABLE

线缆类型 CABLE TYPE	阻抗 IMPEDANCE	频率范围 FREQUENCY RANGE	衰减 ATTENUATION (M)	线缆外径 CABLE O.D.	线缆保持力 CABLE RETENTION FORCE
.047 "	50 Ω	18GHz	6.03dB	1.2 mm	3Kg.f
.086 "	50 Ω	18GHz	3.73dB	2.1 mm	10Kg.f
.141 "	50 Ω	18GHz	2.22dB	3.5 mm	10Kg.f
.250 "	50 Ω	18GHz	1.42dB	6.3 mm	30Kg.f

半刚线缆

Semi-Rigid CABLE

线缆类型 CABLE TYPE	阻抗 IMPEDANCE	频率范围 FREQUENCY RANGE	衰减 ATTENUATION (M)	线缆外径 CABLE O.D.	线缆保持力 CABLE RETENTION FORCE
.047 "	50 Ω	18GHz	6.03dB	1.2 mm	3Kg.f
RG405	50 Ω	18GHz	3.73dB	2.1 mm	10Kg.f
RG402	50 Ω	18GHz	2.22dB	3.5 mm	30Kg.f
RG401	50 Ω	10GHz	0.89dB	6.3 mm	90Kg.f

连接器选型指南

CONNECTOR SELECTION GUIDE

Cable Assembly		Flexible																		
Connector Series	Connector Type	Solid PTFE						PE Dielectric												
		RG 178	RG 188	RG 316	RG 142	RG 400	RG 393	RG 174	RG 58	RG 223	RG 214	LMR 100	LMR 195	LMR 200	LMR 240	LMR 400	LMR 600	RG 59	RG 6	
7/16 (DIN)	Plug ST				○	○	○		○	○	○			○	○	○	○			
	Plug RA				○	○	○		○	○	○			○	○	○	○			
	Jack ST				○	○	○		○	○	○			○	○	○	○			
	Jack BH				○	○	○		○	○	○			○	○	○	○			
4.3-10 (Mini DIN)	Plug ST				○	○	○		○	○	○			○	○	○	○			
	Plug RA				○	○	○		○	○	○			○	○	○	○			
	Jack ST				○	○	○		○	○	○			○	○	○	○			
	Jack BH				○	○	○		○	○	○			○	○	○	○			
4.1-9.5 (Mini DIN)	Plug ST				○	○	○		○	○	○			○	○	○	○			
	Plug RA				○	○	○		○	○	○			○	○	○	○			
	Jack ST				○	○	○		○	○	○			○	○	○	○			
	Jack BH				○	○	○		○	○	○			○	○	○	○			
N	Plug ST		○	○	○	○	○	○	○	○	○	○	○	○	○	○	○	○	○	○
	Plug RA		○	○	○	○	○	○	○	○	○	○	○	○	○	○	○	○	○	○
	Jack ST		○	○	○	○	○	○	○	○	○	○	○	○	○	○	○	○	○	○
	Jack BH		○	○	○	○	○	○	○	○	○	○	○	○	○	○	○	○	○	○
TNC	Plug ST	○	○	○	○	○	○	○	○	○	○	○	○	○	○	○	○	○	○	○
	Plug RA	○	○	○	○	○	○	○	○	○	○	○	○	○	○	○	○	○	○	○
	Jack ST	○	○	○	○	○	○	○	○	○	○	○	○	○	○	○	○	○	○	○
	Jack BH	○	○	○	○	○	○	○	○	○	○	○	○	○	○	○	○	○	○	○
BNC	Plug ST	○	○	○	○	○	○	○	○	○	○	○	○	○	○	○	○	○	○	○
	Plug RA	○	○	○	○	○	○	○	○	○	○	○	○	○	○	○	○	○	○	○
	Jack ST	○	○	○	○	○	○	○	○	○	○	○	○	○	○	○	○	○	○	○
	Jack BH	○	○	○	○	○	○	○	○	○	○	○	○	○	○	○	○	○	○	○
SMA	Plug ST	○	○	○	○	○	○	○	○	○	○	○	○	○	○	○	○	○	○	○
	Plug RA	○	○	○	○	○	○	○	○	○	○	○	○	○	○	○	○	○	○	○
	Jack ST	○	○	○	○	○	○	○	○	○	○	○	○	○	○	○	○	○	○	○
	Jack BH	○	○	○	○	○	○	○	○	○	○	○	○	○	○	○	○	○	○	○
SMB	Plug ST	○	○	○	○	○	○	○	○	○	○	○	○	○	○	○	○	○	○	○
	Plug RA	○	○	○	○	○	○	○	○	○	○	○	○	○	○	○	○	○	○	○
	Jack ST	○	○	○	○	○	○	○	○	○	○	○	○	○	○	○	○	○	○	○
	Jack BH	○	○	○	○	○	○	○	○	○	○	○	○	○	○	○	○	○	○	○
SMP	Plug ST	○	○	○				○												
	Plug RA	○	○	○				○												
	Jack ST	○	○	○				○												
	Jack BH	○	○	○				○												
MCX	Plug ST	○	○	○				○												
	Plug RA	○	○	○				○												
	Jack ST	○	○	○				○												
	Jack BH	○	○	○				○												
MMCX	Plug ST	○	○	○				○												
	Plug RA	○	○	○				○												
	Jack ST	○	○	○				○												
	Jack BH	○	○	○				○												
F	Plug ST																		○	○
	Jack BH																		○	○

CABLE ASSEMBLIES

连接器选型指南

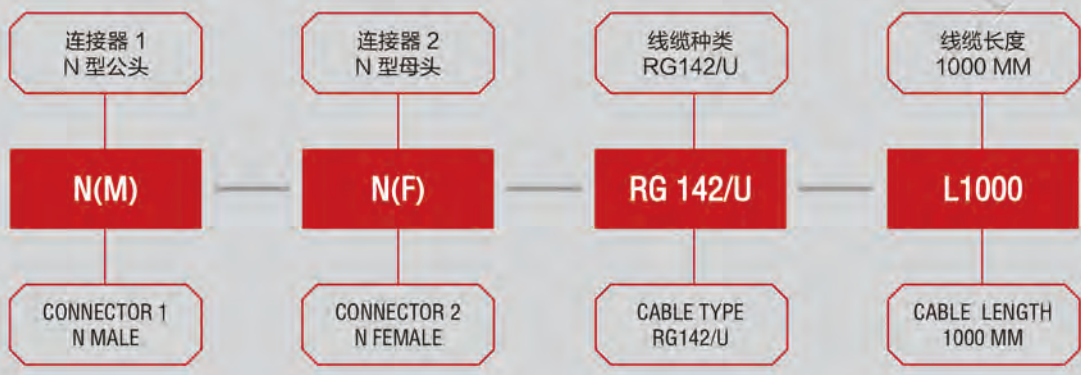
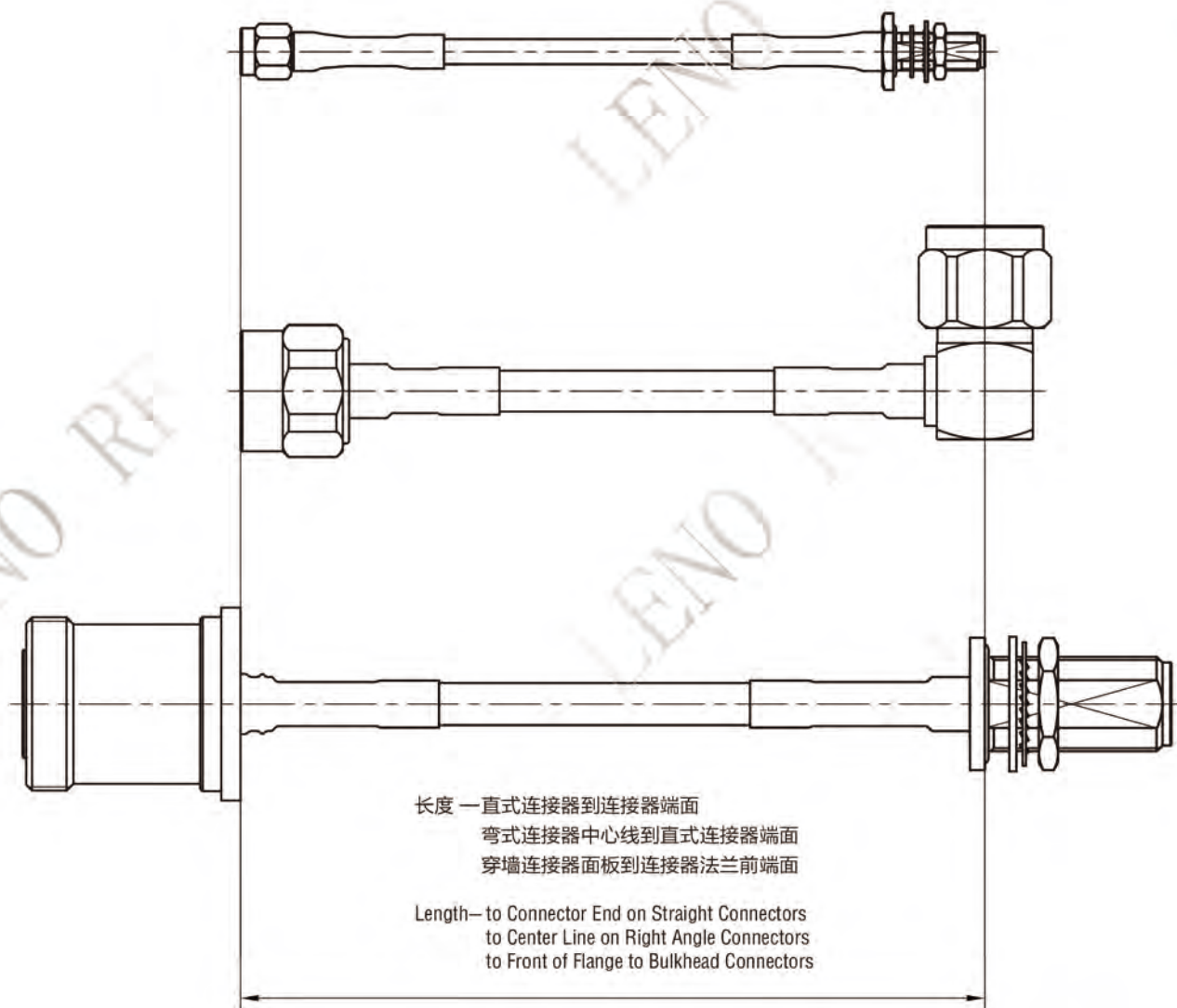
CONNECTOR SELECTION GUIDE

Cable Assembly		Semi-Flexible				Semi-Rigid			
Connector Series	Connector Type	Solid PTFE				Solid PTFE			
		.047"	.086"	.141"	.250"	.047"	RG405	RG402	RG401
7/16 (DIN)	Plug ST		○	○	○		○	○	○
	Plug RA		○	○	○		○	○	○
	Jack ST		○	○	○		○	○	○
	Jack BH		○	○	○		○	○	○
4.3-10 (Mini DIN)	Plug ST		○	○	○		○	○	○
	Plug RA		○	○	○		○	○	○
	Jack ST		○	○	○		○	○	○
	Jack BH		○	○	○		○	○	○
4.1-9.5 (Mini DIN)	Plug ST		○	○	○		○	○	○
	Plug RA		○	○	○		○	○	○
	Jack ST		○	○	○		○	○	○
	Jack BH		○	○	○		○	○	○
N	Plug ST		○	○	○		○	○	○
	Plug RA		○	○	○		○	○	○
	Jack ST		○	○	○		○	○	○
	Jack BH		○	○	○		○	○	○
TNC	Plug ST		○	○	○		○	○	○
	Plug RA		○	○	○		○	○	○
	Jack ST		○	○	○		○	○	○
	Jack BH		○	○	○		○	○	○
BNC	Plug ST		○	○	○		○	○	○
	Plug RA		○	○	○		○	○	○
	Jack ST		○	○	○		○	○	○
	Jack BH		○	○	○		○	○	○
SMA	Plug ST	○	○	○	○	○	○	○	○
	Plug RA	○	○	○	○	○	○	○	○
	Jack ST	○	○	○	○	○	○	○	○
	Jack BH	○	○	○	○	○	○	○	○
SMB	Plug ST		○				○		
	Plug RA		○				○		
	Jack ST		○				○		
	Jack BH		○				○		
SMP	Plug ST	○	○	○		○	○	○	
	Plug RA	○	○	○		○	○	○	
	Jack ST	○	○	○		○	○	○	
	Jack BH	○	○	○		○	○	○	
MCX	Plug ST		○	○			○	○	
	Plug RA		○	○			○	○	
	Jack ST		○	○			○	○	
	Jack BH		○	○			○	○	
MMCX	Plug ST		○	○			○	○	
	Plug RA		○	○			○	○	
	Jack ST		○	○			○	○	
	Jack BH		○	○			○	○	
F	Plug ST								
	Jack BH								

线缆组件订单格式

CABLE ASSEMBLY ORDER FORM

CABLE ASSEMBLIES



跳线

JUMPER CABLE

波纹电缆组件的外导体由波纹管（螺旋或环状绕组）构成。这种结构可实现完美屏蔽并具有一定的灵活性，同时可保持较大的弯曲半径。这些电缆具有较高的性能水平，能够用于户外长距离传输线。

The outer conductor of Corrugated Cable Assemblies is constructed of a corrugated tube (spiral or ringed winding). This construction allows perfect shielding and some flexibility while maintaining a large bending radius. The high performance level of these cables enable them to be used in outdoor long length transmission lines.



产品特点

- VSWR: 1.10 Max. @2.7GHz;
- 较好的弯曲半径；
1/2" 超柔线缆：30mm；
1/2" 普通线缆（单次弯曲）：70mm；
1/2" 普通线缆（多次弯曲）：125mm；
- 出色的三阶互调；
- 更加简易、快速、可靠安装；
- 防水等级依照 IP67/ IP68（配对连接器）；
- 接头注塑增加了机械保护能力。

Product Features

- VSWR: 1.10 Max. @2.7GHz;
- Low bending radius;
30 mm for 1/2" Hiflex
70 mm for 1/2" Standard for single bending
(125 mm for repeated bending)
- Low level of 3rd order intermodulation products;
- Easy, fast and reliable installation;
- Water tightness according to IP67/ IP68 (mated connectors);
- The overmolding of the connector provides an additional mechanical protection.

应用范围

- 基站；
- 天线；
- 测试 & 测量；
- 电信系统。

Application

- Base Stations;
- Antenna;
- Test and Measurement;
- Telecom.



线缆选型指南

CABLE SELECTION GUIDE

波纹铜管线缆

Corrugated Copper Tube CABLE

线缆类型 CABLE TYPE	阻抗 IMPEDANCE	频率范围 FREQUENCY RANGE	衰减 ATTENUATION (M)	线缆外径 CABLE O.D.	线缆保持力 CABLE RETENTION FORCE
1/4" S	50Ω	3GHz	0.33dB	7.5 mm	60Kg.f
3/8" S	50Ω	3GHz	0.25dB	10.2 mm	60Kg.f
1/2" S	50Ω	3GHz	0.21dB	13.4 mm	110Kg.f
7/8" S	50Ω	3GHz	0.08dB	27.5 mm	102Kg.f
1/4"	50Ω	3GHz	0.26dB	9.1 mm	53Kg.f
3/8"	50Ω	3GHz	0.19dB	11.2 mm	53Kg.f
1/2"	50Ω	3GHz	0.13dB	15.7 mm	110Kg.f
7/8"	50Ω	3GHz	0.08dB	27.7 mm	147Kg.f

CABLE ASSEMBLIES

连接器选型指南

CONNECTOR SELECTION GUIDE

Cable Assembly		Corrugated Copper Tube CABLE							
Connector Series	Connector Type	1/4" S	3/8" S	1/2" S	7/8" S	1/4"	3/8"	1/2"	7/8"
7/16 (DIN)	Male ST	○	○	○	○	○	○	○	○
	Male RA	○	○	○	○	○	○	○	○
	Female ST	○	○	○	○	○	○	○	○
	Male ST	○	○	○	○	○	○	○	○
4.3-10 (Mini DIN)	Male RA	○	○	○	○	○	○	○	○
	Female ST	○	○	○	○	○	○	○	○
	Male ST	○	○	○	○	○	○	○	○
	Male RA	○	○	○	○	○	○	○	○
4.1-9.5 (Mini DIN)	Female ST	○	○	○	○	○	○	○	○
	Male ST	○	○	○	○	○	○	○	○
	Male RA	○	○	○	○	○	○	○	○
	Female ST	○	○	○	○	○	○	○	○
N	Plug ST	○	○	○	○	○	○	○	○
	Plug RA	○	○	○	○	○	○	○	○
	Jack ST	○	○	○	○	○	○	○	○
	Jack BH	○	○	○	○	○	○	○	○

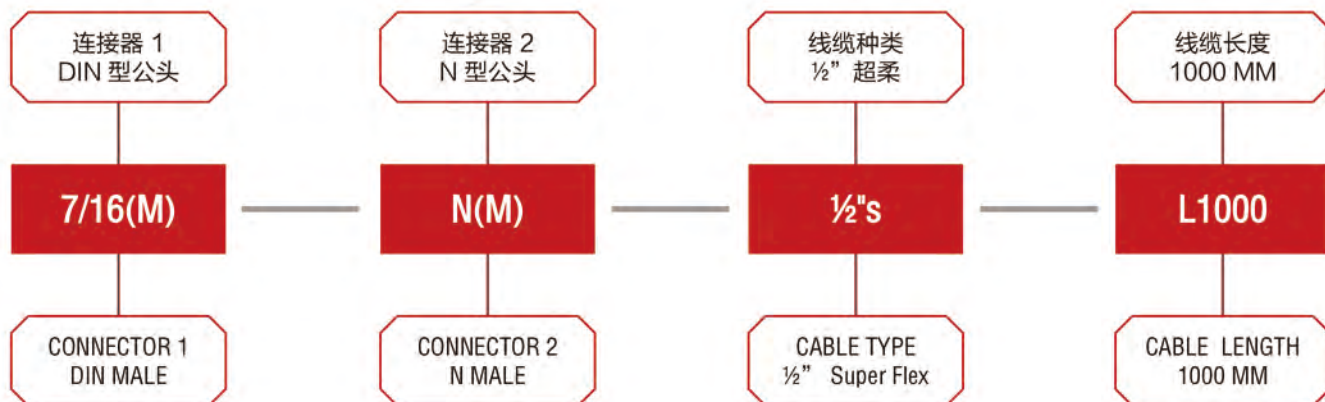
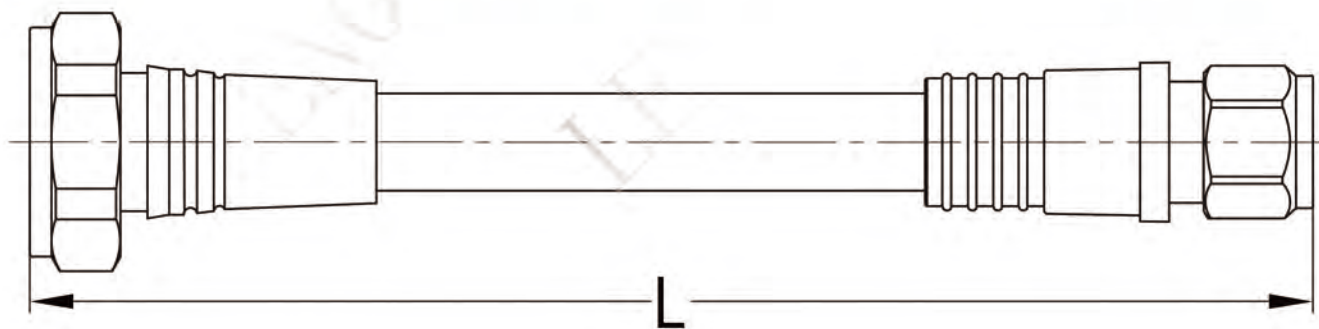
*7/16(DIN), 4.3-10, 4.1-9.5 PIM3rd ≤ -158dBc;

*N PIM3rd ≤ -155dBc

技术参数

Technical Specification

电气性能	参数	Electrical Data	Data		
阻抗	50 Ω	Impedance	50 Ω		
频段范围	DC-2.7GHz	Frequency Range	DC-2.7GHz		
电压驻波比	≤ 1.10	VSWR	≤ 1.10		
介质耐电压	≥ 1500V DC	Dielectric Withstanding Voltage	≥ 1500V DC		
介质阻抗	≥ 5000MΩ	Dielectric Resistance	≥ 5000MΩ		
三阶互调	≤ -158 dBc@2x20W	PIM 3rd	≤ -158 dBc@2x20W		
机械性能	参数	Mechanical Data	Data		
插拔次数	≥ 500	Mating Cycles	≥ 500		
材料特性	参数	Material Data	Data		
连接器零件	材料	电镀	Connector Part	Material	Finish
外导体	黄铜	镀银 / 镀三元合金	Body	Brass	Silver Plated / White Bronze Plated
连接螺母	黄铜	镀镍 / 镀三元合金	Coupling Nut	Brass	Nickel Plated / White Bronze Plated
内导体	黄铜 / 磷铜	镀金 / 镀银	Center Contact	Brass/Phosphor Bronze	Gold Plated / Silver Plated
绝缘体	PTFE		Insulator	PTFE	
垫圈	硅橡胶		Gasket or O-Ring	Silicone Rubber	
环境特性	参数	Environmental Data	Data		
温度范围	-40℃ ~+85℃	Temperature Range	-40℃ ~+85℃		
耐腐蚀性 (盐雾)	96 小时 (5% 盐浓度)	Corrosion (Salt Spray)	96 hours (5% Salt Concentration)		
防水性	IP67/IP68 (配对接头)	Vibration	IP67/IP68 (Mated Connectors)		
RoHS	EU Directive 2002/95/EC	RoHS	EU Directive 2002/95/EC		



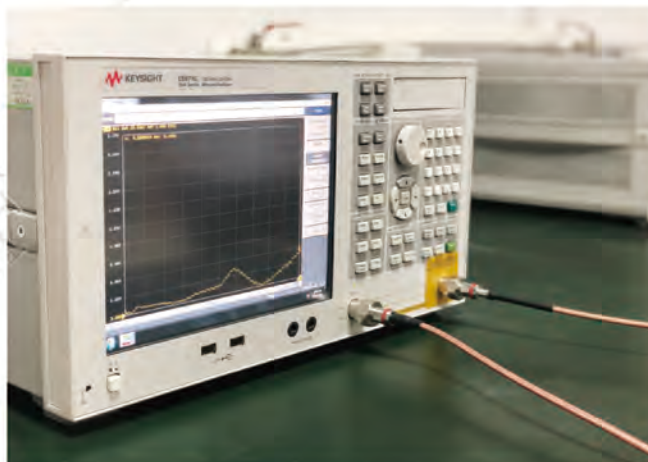
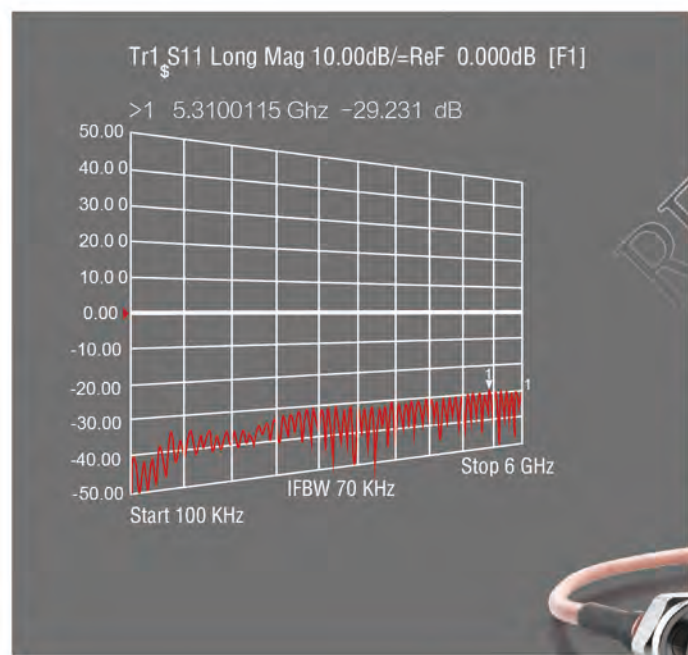
测试线缆

TEST CABLE

我们为射频测试仪器所设计的端到端测试线缆和连接器可达到卓越的性能要求，得以解决客户关注的问题。针对高精密度和高柔韧性的测试和测量应用是最佳的解决方案。

We fully design end to end TestPro cables and connectors to reach high performance requirements to address customers concerns when doing RF measurements. The TestPro range is the perfect solution for Test and Measurement applications where high precision quality and high flexibility .

CABLE ASSEMBLIES



稳定性
Stability

100% 测试
100% tested

出色的电气性能
Excellent electrical parameters

精密连接器
Precision Connector

持久性
High mating cycles

连接器 Connector		频率 Frequency	驻波比 VSWR
Connector 1	Connector 2		
N Male	N Male	DC-6GHz	1.09 Max.
N Male	N Male	DC-18GHz	1.20 Max.
N Male	SMA Male	DC-6GHz	1.09 Max.
N Male	SMA Male	DC-18GHz	1.20 Max.
SMA Male	SMA Male	DC-18GHz	1.20 Max.
2.92 Male	2.92 Male	DC-40GHz	1.30 Max.

技术参数

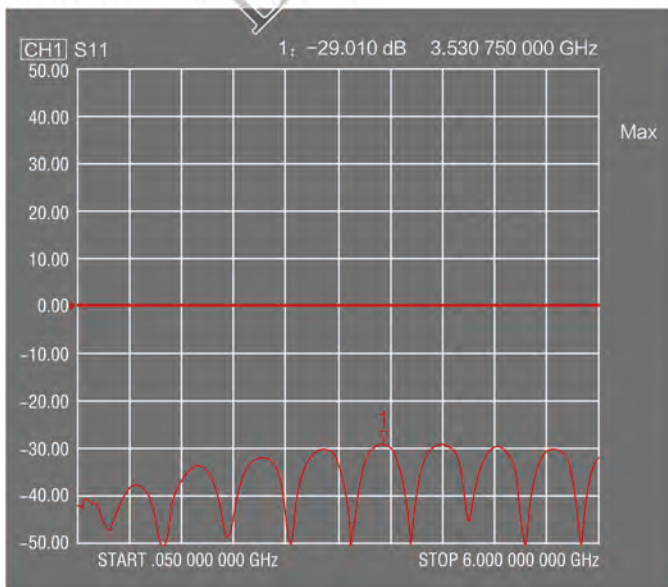
Technical Specification

电气性能	参数	Electrical Data	Data		
阻抗	50 Ω	Impedance	50 Ω		
工作电压	335V rms	Work Voltage	335V rms		
绝缘阻抗	≥ 5000MΩ	Insulation Resistance	≥ 5000MΩ		
机械性能	参数	Mechanical Data	Data		
插拔次数	≥ 1000	Mating Cycles	≥ 1000		
连接力矩	0.8~1.1Nm	Coupling Torque	0.8~1.1Nm		
连接螺母保持力	≥ 270N	Coupling Nut Retention	≥ 270N		
材料特性	参数	Material Data	Data		
连接器零件	材料	电镀	Connector Part	Material	Finish
外导体	黄铜 / 不锈钢	镀三元合金 / 钝化	Body	Brass/Stainless Steel	White Bronze Plated/ Passivation
连接螺母	黄铜 / 不锈钢	镀三元合金 / 钝化	Coupling Nut	Brass/Stainless Steel	White Bronze Plated/ Passivation
内导体	黄铜 / 铍铜	镀金 / 镀银	Center Contact	Brass/Beryllium Copper	Gold Plated/ Silver Plated
绝缘体	PTFE		Insulator	PTFE	
垫圈	硅橡胶		Gasket or O-Ring	Silicone Rubber	
环境特性	参数	Environmental Data	Data		
温度范围	-55℃ ~+125℃	Temperature Range	-55℃ ~+125℃		
耐腐蚀性 (盐雾)	96 小时 (5% 盐浓度)	Corrosion (Salt Spray)	96 hours (5% Salt Concentration)		
RoHS	EU Directive 2002/95/EC	RoHS	EU Directive 2002/95/EC		

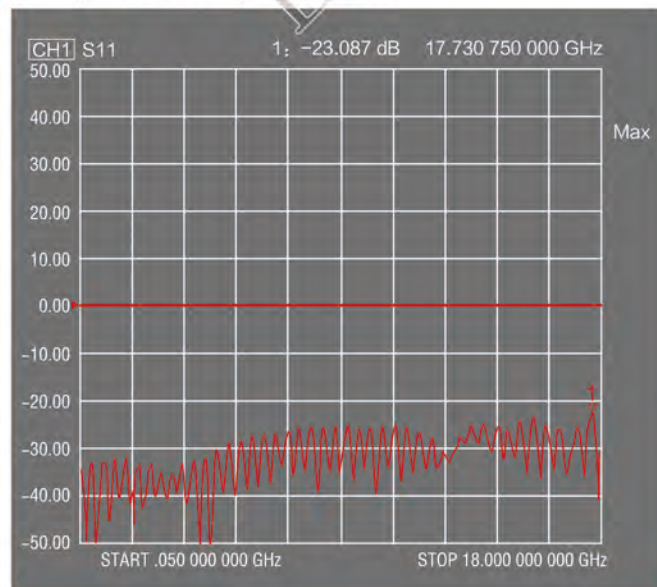
性能

Performance

N Plug To N Plug with RG142



N Plug To SMA Plug with SF142

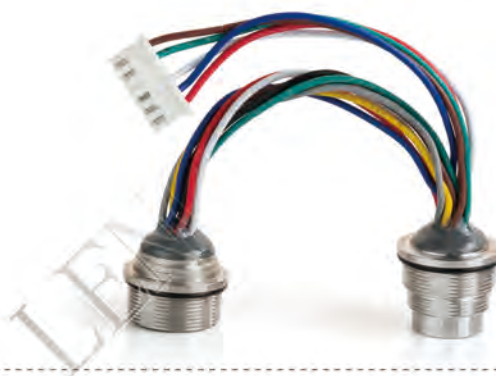


AISG 线缆

AISG CABLE

RC 低频线缆组件

RC Low Frequency Cable Assembly



产品特点

- 耐盐雾腐蚀；
- 防护等级达 IP67；
- 无卤素，抗紫外线。

Product Features

- Salt Spray Resistant;
- Conform to IP 67;
- No halogen and UV Resistance.

应用范围

- 遥控电调倾角天线；
- 塔顶放大器；
- 测试 & 测量；
- 数据处理设备；
- 电信系统。

Application

- RET Control Cable;
- TMA ;
- Test and Measurement;
- Data Processing Equipment;
- Telecom.

技术参数

Technical Specification

电气性能	参数	Electrical Data	Data		
额定电压	300 V	Rating Voltage	300 V		
耐电压	1500 V	Withstanding Voltage	1500 V		
额定电流	5 A	Rating Current	5 A		
绝缘阻抗	$\geq 100M\Omega$	Insulation Resistance	$\geq 100M\Omega$		
接触电阻	$\leq 5.0 m\Omega$	Contact Resistance	$\leq 5.0 m\Omega$		
机械性能	参数	Mechanical Data	Data		
插拔次数	≥ 500	Mating Cycles	≥ 500		
连接力矩	1.1Nm	Coupling Torque	1.1Nm		
连接螺母保持力	$\geq 350N$	Coupling Nut Retention	$\geq 350N$		
材料特性	参数	Material Data	Data		
连接器零件	材料	电镀	Connector Part	Material	Finish
外导体	黄铜 / 锌合金	镀镍 / 镀三元合金	Body	Brass/Zinc Die Cast	Nickel Plated/ White Bronze Plated
连接螺母	黄铜	镀镍 / 镀三元合金	Coupling Nut	Brass	Nickel Plated/ White Bronze Plated
内导体	黄铜 / 磷铜 / 铍铜	镀金	Center Contact	Brass/Phosphor Bronze/ Beryllium Copper	Gold Plated
绝缘体	热塑性材料		Insulator	Thermoplastic material	
环境特性	参数	Environmental Data	Data		
气候层序	IEC 60068-2-14	Climatic Sequence Test Method	IEC 60068-2-14		
耐腐蚀性 (盐雾)	IEC 60068-2-11, Test Condition Ka	Corrosion Test Method	IEC 60068-2-11, Test Condition Ka		
工作温度	-40 °C to +70 °C (-40° F to +158° F)	Operating Temperature	-40 °C to +70 °C (-40° F to +158° F)		
防护等级	IEC 60529:2001, IP67	Ingress Protection Test Method	IEC 60529:2001, IP67		

注：这些特性具有典型代表性，不适用于所有连接器。

Note: These characteristics are typical and may not apply to all connectors.

AISG 线缆

AISG CABLE



RC 低频线缆组件

RC Low Frequency Cable Assembly

RET control cable with male DB9 and female AISG connector

AISG DB9 Cable

- 为 RET 系统零件提供数据和电源;
- 直接连接 RET 致动器和 RRH (射频拉远头) 及 DB9 接头
- Feeds data and power to RET system components;
- Directly connects RET actuator with RRH (Remote Radio Heads) with DB9 connector.

技术参数

Technical Specification

电气性能	参数	Electrical Data	Data
EU 认证	CB/CE	EU Certification	CB/ CE
协议	AISG 1.1 / AISG 2.0	Protocol	AISG 1.1 /AISG 2.0
电压	≤ 300 V	Voltage	≤ 300 V
机械性能	参数	Mechanical Data	Data
AISG 接头 A	8-pin DIN 直式母头	AISG Connector A	8-pin DIN Female straight
AISG 接头 A 标准	IEC 60130-9	AISG Connector A Standard	IEC 60130-9
接头 B	9-pin D-sub 公头	Connector B	9-pin D-sub Male
数据导体种类	0.24 mm ² (24 AWG) 双绞线	Data Conductor Type	0.24 mm ² (24 AWG) twisted pair
电源导体种类	0.82 mm ² (18 AWG) 标准线	Power Conductor Type	0.82 mm ² (18 AWG) stranded
颜色	黑色	Color	Black
环境特性	参数	Environmental Data	Data
气候层序	IEC 60068-2-14	Climatic Sequence Test Method	IEC 60068-2-14
耐腐蚀性 (盐雾)	IEC 60068-2-11, Test Condition Ka	Corrosion Test Method	IEC 60068-2-11, Test Condition Ka
工作温度	-40°C to +70°C (-40° F to +158° F)	Operating Temperature	-40°C to +70°C (-40° F to +158° F)
抗紫外线	IEC 60068-2-5, Test Condition B	UV Resistance Test Method	IEC 60068-2-5, Test Condition B
防护等级	IEC 60529:2001, IP67	Ingress Protection Test Method	IEC 60529:2001, IP67

注: 这些特性具有典型代表性, 不适用于所有连接器。

Note: These characteristics are typical and may not apply to all connectors.

AISG 线缆

AISG CABLE



RC 低频线缆组件

RC Low Frequency Cable Assembly

RET control cable with male DB15 and female AISG connector

AISG DB15 Cable

- 为 RET 系统零件提供数据和电源;
- 直接连接 RET 致动器和 RRH (射频拉远头) 及 DB15 接头

- Feeds data and power to RET system components;
- Directly connects RET actuator with RRH (Remote Radio Heads) with DB15 connector.

技术参数

Technical Specification

电气性能	参数	Electrical Data	Data
EU 认证	CB/CE	EU Certification	CB/CE
协议	AISG 1.1 /AISG 2.0	Protocol	AISG 1.1 /AISG 2.0
电压	≤ 300 V	Voltage	≤ 300 V
机械性能	参数	Mechanical Data	Data
AISG 接头 A	8-pin DIN 直式母头	AISG Connector A	8-pin DIN Female straight
AISG 接头 A 标准	IEC 60130-9	AISG Connector A Standard	IEC 60130-9
接头 B	15-pin D-sub 公头	Connector B	15-pin D-sub Male
数据导体种类	0.24 mm ² (24 AWG) 双绞线	Data Conductor Type	0.24 mm ² (24 AWG) twisted pair
电源导体种类	0.75 mm ² (19 AWG) 标准线	Power Conductor Type	0.75 mm ² (19 AWG) stranded
颜色	黑色	Color	Black
环境特性	参数	Environmental Data	Data
气候层序	IEC 60068-2-14	Climatic Sequence Test Method	IEC 60068-2-14
耐腐蚀性 (盐雾)	IEC 60068-2-11, Test Condition Ka	Corrosion Test Method	IEC 60068-2-11, Test Condition Ka
工作温度	-40°C to +70°C (-40° F to +158° F)	Operating Temperature	-40°C to +70°C (-40° F to +158° F)
抗紫外线	IEC 60068-2-5, Test Condition B	UV Resistance Test Method	IEC 60068-2-5, Test Condition B
防护等级	IEC 60529:2001, IP67	Ingress Protection Test Method	IEC 60529:2001, IP67

注: 这些特性具有典型代表性, 不适用于所有连接器。

Note: These characteristics are typical and may not apply to all connectors.

AISG 线缆

AISG CABLE

AISG RET Control Cable

AISG Standard Cable



- 为 RET 系统零件提供数据和电源；
- Feeds data and power to RET system components
- 满足 AISG 和 RoHS 标准。
- AISG and RoHS compliant

技术参数

Technical Specification

电气性能	参数	Electrical Data	Data
EU 认证	CB/CE	EU Certification	CB/ CE
协议	AISG 1.1 / AISG 2.0	Protocol	AISG 1.1 /AISG 2.0
电压	≤ 300 V	Voltage	≤ 300 V
机械性能	参数	Mechanical Data	Data
AISG 接头 A	8-pin DIN 直式母头	AISG Connector A	8-pin DIN Female straight
AISG 接头 A 标准	IEC 60130-9	AISG Connector A Standard	IEC 60130-9
接头 B	8-pin DIN 直式公头	Connector B	8-pin DIN Male straight
数据导体种类	0.24 mm ² (24 AWG) 双绞线	Data Conductor Type	0.24 mm ² (24 AWG) twisted pair
电源导体种类	0.82 mm ² (18 AWG) 标准线	Power Conductor Type	0.82 mm ² (18 AWG) stranded
总芯数	6	Total Conductors, quantity	6
颜色	黑色	Color	Black
环境特性	参数	Environmental Data	Data
气候层序	IEC 60068-2-14	Climatic Sequence Test Method	IEC 60068-2-14
耐寒测试	IEC 60068-2-1	Cold Exposure Test Method	IEC 60068-2-1
湿热测试	IEC 60068-2-30, Test Condition Db	Damp Heat Exposure Test Method	IEC 60068-2-30, Test Condition Db
防火测试	IEC 60068-2-2	Heat Exposure Test Method	IEC 60068-2-2
雨淋模拟测试	IEC 60068-2-18, Test Condition Ra, Method 1	Rain Simulation Test Method	IEC 60068-2-18, Test Condition Ra, Method 1
工作温度	-40°C to +70°C (-40° F to +158° F)	Operating Temperature	-40°C to +70°C (-40° F to +158° F)
抗紫外线	IEC 60068-2-5, Test Condition B	UV Resistance Test Method	IEC 60068-2-5, Test Condition B
防护等级	IEC 60529:2001, IP67	Ingress Protection Test Method	IEC 60529:2001, IP67

注：这些特性具有典型代表性，不适用于所有连接器。

Note: These characteristics are typical and may not apply to all connectors.

AISG 线缆

AISG CABLE

AISG RET Control Cable Two-way Splitter



技术参数

Technical Specification

电气性能	参数	Electrical Data	Data
EU 认证	CB/CE	EU Certification	CB/ CE
协议	AISG 1.1 / AISG 2.0	Protocol	AISG 1.1 /AISG 2.0
电压	≤ 300 V	Voltage	≤ 300 V
机械性能	参数	Mechanical Data	Data
AISG 输入接头	8-pin DIN 直式公头	AISG Input Connector	8-pin DIN Male straight
AISG 输出接头	8-pin DIN 直式母头	AISG Output Connector	8-pin DIN Female straight
接头数量	输入: 输出 =1:2	Connector Quantity	Input: Output=1:2
数据导体种类	0.24 mm ² (24 AWG) 双绞线	Data Conductor Type	0.24 mm ² (24 AWG) twisted pair
电源导体种类	0.75 mm ² (19 AWG) 标准线	Power Conductor Type	0.75 mm ² (19 AWG) stranded
总芯数	6	Total Conductors, quantity	6
颜色	黑色	Color	Black
环境特性	参数	Environmental Data	Data
气候层序	IEC 60068-2-14	Climatic Sequence Test Method	IEC 60068-2-14
耐寒测试	IEC 60068-2-1	Cold Exposure Test Method	IEC 60068-2-1
湿热测试	IEC 60068-2-30, Test Condition Db	Damp Heat Exposure Test Method	IEC 60068-2-30, Test Condition Db
防火测试	IEC 60068-2-2	Heat Exposure Test Method	IEC 60068-2-2
耐腐蚀测试	IEC 60068-2-11, Test Condition Ka	Corrosion Test Method	IEC 60068-2-11, Test Condition Ka
雨淋模拟测试	IEC 60068-2-18, Test Condition Ra, Method 1	Rain Simulation Test Method	IEC 60068-2-18, Test Condition Ra, Method 1
工作温度	-40°C to +70°C (-40° F to +158° F)	Operating Temperature	-40°C to +70°C (-40° F to +158° F)
抗紫外线	IEC 60068-2-5, Test Condition B	UV Resistance Test Method	IEC 60068-2-5, Test Condition B
防护等级	IEC 60529:2001, IP67	Ingress Protection Test Method	IEC 60529:2001, IP67

注：这些特性具有典型代表性，不适用于所有连接器。

Note: These characteristics are typical and may not apply to all connectors.

AISG 线缆

AISG CABLE

AISG Female Cable



技术参数

Technical Specification

电气性能	参数	Electrical Data	Data
EU 认证	CB/CE	EU Certification	CB/ CE
协议	AISG 1.1 / AISG 2.0	Protocol	AISG 1.1 /AISG 2.0
电压	≤ 300 V	Voltage	≤ 300 V
机械性能	参数	Mechanical Data	Data
AISG 接头	8-pin DIN 直式母头	AISG Connector	8-pin DIN Female straight
编制覆盖	85%	Braid Coverage	85%
数据导体种类	0.24 mm ² (24 AWG) 双绞线	Data Conductor Type	0.24 mm ² (24 AWG) twisted pair
护套材料	热塑性弹性体 TPE	Jacket Material	Thermoplastic elastomer (TPE)
总芯数	8	Total Conductors, quantity	8
颜色	依照客户要求	Color	per customer's requirement
环境特性	参数	Environmental Data	Data
气候层序	IEC 60068-2-14	Climatic Sequence Test Method	IEC 60068-2-14
耐寒测试	IEC 60068-2-1	Cold Exposure Test Method	IEC 60068-2-1
湿热测试	IEC 60068-2-30, Test Condition Db	Damp Heat Exposure Test Method	IEC 60068-2-30, Test Condition Db
防火测试	IEC 60068-2-2	Heat Exposure Test Method	IEC 60068-2-2
耐腐蚀测试	IEC 60068-2-11, Test Condition Ka	Corrosion Test Method	IEC 60068-2-11, Test Condition Ka
雨淋模拟测试	IEC 60068-2-18, Test Condition Ra, Method 1	Rain Simulation Test Method	IEC 60068-2-18, Test Condition Ra, Method 1
工作温度	-40℃ to +70℃ (-40° F to +158° F)	Operating Temperature	-40℃ to +70℃ (-40° F to +158° F)
抗紫外线	IEC 60068-2-5, Test Condition B	UV Resistance Test Method	IEC 60068-2-5, Test Condition B
防护等级	IEC 60529:2001, IP67	Ingress Protection Test Method	IEC 60529:2001, IP67

注：这些特性具有典型代表性，不适用于所有连接器。

Note: These characteristics are typical and may not apply to all connectors.