

3-PHASE UPS SYSTEMS



SmartOnline® S3MX Series

Clean, continuous power in a compact UPS designed for critical applications.

30 to 200 kVA, 380/400/415V Ph-Ph

- Best-in-class footprint and power density
- Reduced cost of ownership
- Large, advanced colour touchscreen
- Efficient and reliable operation
- Powerful network management
- Parallel capability up to 400 kVA
- VFI operation with DSP control
- Comprehensive service plans



Clean, Continuous Power in a Compact UPS for Critical Applications

Tripp Lite's SmartOnline S3MX UPS series supports the continuous availability of your most important loads through all power conditions, providing a compact backup power platform that is easy to manage and inexpensive to operate. SmartOnline S3MX provides up to 200 kVA of clean, continuous power in a remarkably compact footprint. It is perfect for critical applications in IT, communications, corporate, commercial, retail, financial, security, transportation, emergency and light industrial environments.

Key Features and Benefits

BEST-IN-CLASS FOOTPRINT AND POWER DENSITY

- Tiny footprint for up to 200 kVA saves valuable space for revenue-generating equipment
- Parallel capability provides up to 400 kVA

EFFICIENT, HIGH-PERFORMANCE DESIGN

- 94% double-conversion efficiency and 98% ECO-mode efficiency reduce operating costs
- Low THDi (< 3%) improves generator compatibility
- Low THDv ($\leq 2\%$) and active power factor correction improve output performance
- Voltage and frequency independent (VFI) operation and advanced IGBT rectifier technology with DSP control provide reliable output power quality
- Built-in static and maintenance bypass transfer UPS load to utility power during faults, overloads and maintenance to avoid costly system downtime

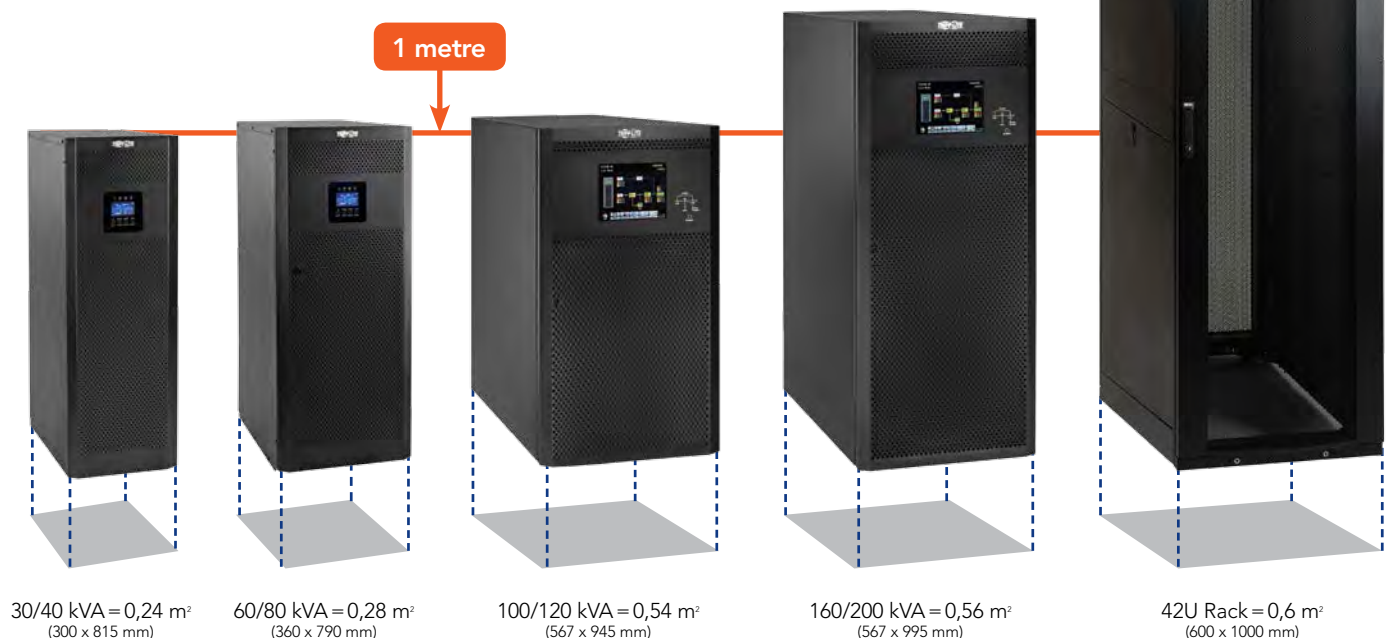
POWERFUL UPS MANAGEMENT

- Large (25,4 cm / 10 in.) colour touchscreen display permits comprehensive local management through an advanced, intuitive and user-friendly interface
- Optional network management card enables remote management through embedded HTML5 web, SSH/telnet and SNMP interfaces, as well as integration with a wide range of Network Management Systems and DCIM platforms
- Standard Remote Emergency Power Off (REPO) allows shutdown from a safe distance during emergencies

COMPREHENSIVE SERVICE PLANS*

- Tripp Lite CareSM service plans improve UPS reliability, longevity and cost control through preventive maintenance, rapid response and 24/7 support

How small is it? SmartOnline S3MX provides up to 200 kVA in a footprint smaller than a standard 42U rack enclosure.



SmartOnline S3MX Series Uses Less Space in Your Data Centre and Your Budget

Highly efficient transformerless double-conversion technology delivers operating cost savings, and its compact design provides the most power for the lowest cost in the least space.



Reduced Cost of Ownership

- 94% efficiency in double-conversion mode and 98% in ECO mode reduce your organisation's power and cooling costs
- Low THDi (< 3%) and active input power factor correction eliminate costly over-sizing of generators and other equipment
- Small footprint requires less data centre space and allows installation in smaller spaces without expensive retrofitting
- Unified platform and firmware design reduces the number of unique boards, improving mean time to repair (MTTR)
- Simpler maintenance and comprehensive Tripp Lite Care service plans* reduce costly scheduled and unscheduled downtime

* Service availability varies with location. Please contact your local Tripp Lite sales representative for more information.

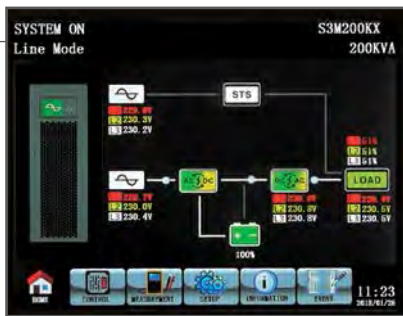




Powerful Local Management is at Your Fingertips

The large (25,4 cm / 10 in.) colour touchscreen display on 100 to 200 kVA models enables comprehensive local monitoring and control through an advanced, intuitive and user-friendly interface.

The **HOME** screen displays a variety of important information, including UPS operating status, model, power rating, load percentage by phase, battery charge and navigational buttons to select additional screens.



The **SETUP** screen allows you to change a variety of UPS operating parameters to ensure optimal operation.



The **CONTROL** screen displays commands allowing you to change the operating mode of the UPS and test its batteries.



The **INFORMATION** screen displays important data like UPS and battery configuration and firmware versions.



The **MEASUREMENT** screen is divided into multiple screens showing detailed data about input, output, bypass, load and battery.



The **EVENT** screen displays a detailed log of up to 500 events, allowing you to reconstruct power conditions, troubleshoot faults, observe trends and correct potential problems before they impact system availability.



30 to 80 kVA models include an intuitive LCD that displays a variety of key information at a glance, including operating mode, input/output voltage, load, battery voltage, backup runtime and fault conditions.

Powerful Network Management is Only a Click Away

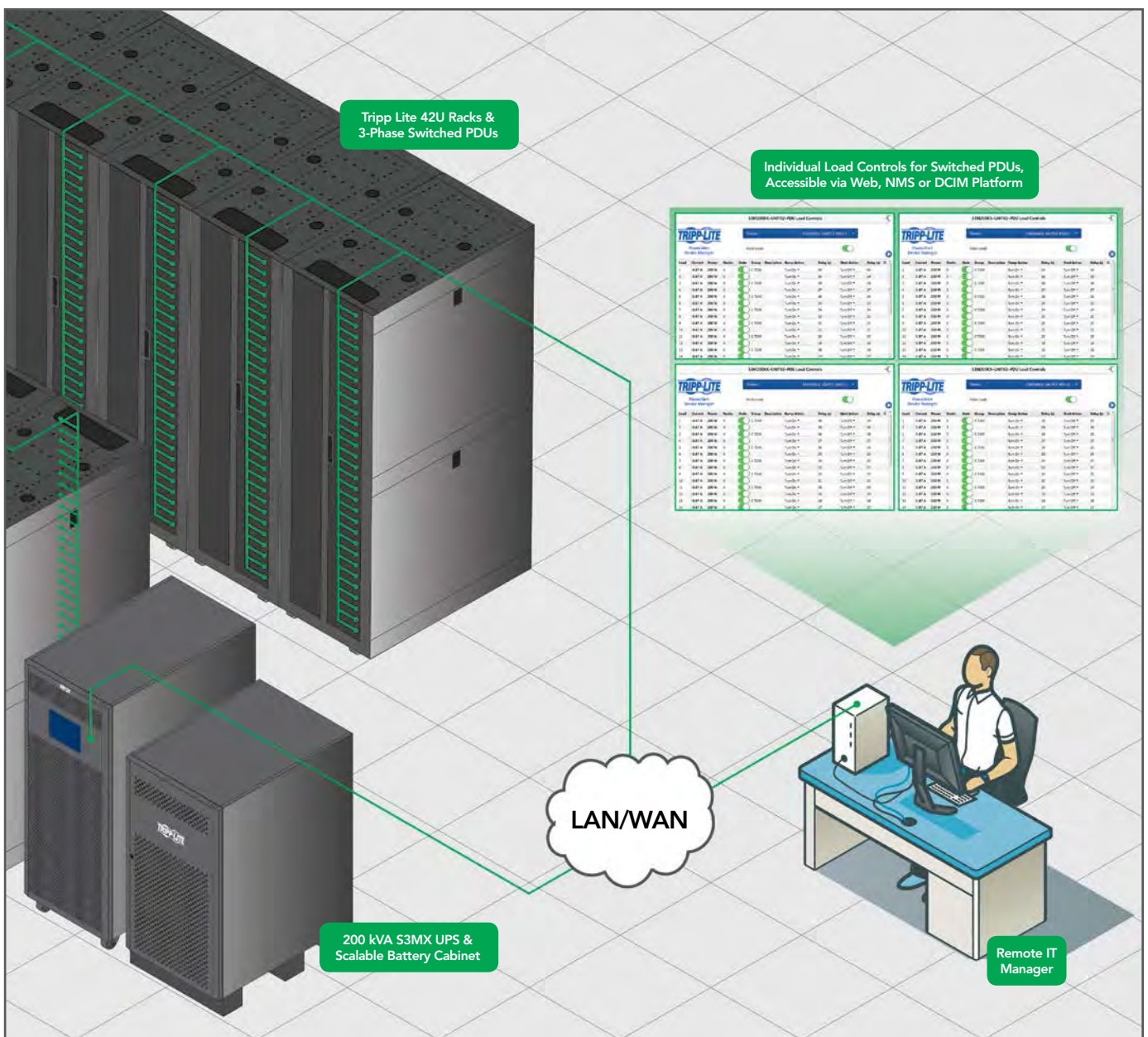


The optional WEBCARDLX accessory card enables remote monitoring and control through HTML5 web, SSH/telnet and SNMP interfaces, as well

as integration with a wide range of Network Management Systems and DCIM platforms. Using WEBCARDLX in your UPS combined with Tripp Lite's network-enabled switched PDUs, you can manage power throughout your facility.

Access UPS systems, switched PDUs and connected sensors from remote locations. Automated alerts allow you to detect problems before they cause downtime.

Load	Current	Phase	Beam	State	Group	Description	Ready Action	Delay (s)	Shield Action	Delay (s)
1	0.87 A	200W	0	ON	E-7100	Turn On =	26	Turn Off =	30	
2	0.87 A	200W	0	ON	E-7100	Turn On =	27	Turn Off =	29	
3	0.87 A	200W	0	ON	E-7100	Turn On =	28	Turn Off =	28	
4	0.87 A	200W	0	ON	E-7100	Turn On =	27	Turn Off =	27	
5	0.87 A	200W	0	ON	E-7100	Turn On =	26	Turn Off =	26	
6	0.87 A	200W	0	ON	E-7100	Turn On =	25	Turn Off =	25	
7	0.87 A	200W	0	ON	E-7100	Turn On =	24	Turn Off =	24	
8	0.87 A	200W	0	ON	E-7100	Turn On =	23	Turn Off =	23	
9	0.87 A	200W	0	ON	E-7100	Turn On =	22	Turn Off =	22	
10	0.87 A	200W	0	ON	E-7100	Turn On =	21	Turn Off =	21	
11	0.87 A	200W	0	ON	E-7100	Turn On =	20	Turn Off =	20	
12	0.87 A	200W	0	ON	E-7100	Turn On =	19	Turn Off =	19	
13	0.87 A	200W	0	ON	E-7100	Turn On =	18	Turn Off =	18	
14	0.87 A	200W	0	ON	E-7100	Turn On =	17	Turn Off =	17	



With the powerful WEBCARDLX accessory card installed in the S3MX UPS and Tripp Lite LX-platform switched PDUs, you can monitor and control power down to the outlet level with billing-grade accuracy.

Model	S3M30KX	S3M40KX	S3M60KX	S3M80KX	S3M100KX	S3M120KX	S3M160KX	S3M200KX
Capacity (VA)	30 kVA	40 kVA	60 kVA	80 kVA	100 kVA	120 kVA	160 kVA	200 kVA
Capacity (Watts)	27 kW	36 kW	54 kW	72 kW	90 kW	108 kW	144 kW	180 kW
INPUT								
Nominal Voltage	Ph-Ph 380V/400V/415V (Ph-N 220V/230V/240V)							
Voltage Range	Ph-Ph 208-478V at < 50% Load; Ph-Ph 208-478V to 305-478V at 50% to 80% Load (Voltage Range Varies with Load); Ph-Ph 305-478V at > 80% Load							
Voltage Comeback	Low-Loss Voltage +10V; High-Loss Voltage -10V							
Nominal Frequency	50/60 Hz (Auto-Selectable)							
Frequency Range	46-54 Hz (50 Hz System); 56-64 Hz (60 Hz System)				40-70 Hz			
Phase	3-Phase with Neutral (3-Phase, Neutral + Ground)							
Power Factor (100% Load)	≥ 0,99							
Harmonic Distortion (THDi; 100% Load)	< 3%							
OUTPUT								
Phase	3-Phase with Neutral (3-Phase, Neutral + Ground)							
Nominal Voltage	Ph-Ph 380V/400V/415V (Ph-N 220V/230V/240V)							
AC Voltage Regulation (Double-Conversion Mode)	±1% (Balanced Load)							
AC Voltage Regulation (Converter Mode or Battery Mode)	±1%							
Power Factor	0,9							
AC Voltage Regulation (ECO Mode)	± 11V of Nominal				± 15V of Nominal			
Frequency	46-54 Hz (50 Hz System); 56-64 Hz (60 Hz System)				Selectable ± 1 Hz, ± 2 Hz, ± 4 Hz of Input (Default: ± 4 Hz)			
Frequency Regulation (Converter Mode or Battery Mode)	± 0,1 Hz							
Frequency Range (Battery Mode)	50 Hz ± 0,1 Hz or 60 Hz ± 0,1 Hz							
Overload (AC Mode)	Up to 110% = 10 min; Up to 130% = 1 min; > 130% = 1 s				Up to 110% = 1 h; Up to 125% = 10 min; Up to 150% = 1 min; > 150% = 200 ms			
Overload (Battery Mode)	Up to 110% = 30 s; Up to 130% = 10 s; > 130% = 1 s				Up to 110% = 1 h; Up to 125% = 10 min; Up to 150% = 1 min; > 150% = 200 ms			
Current Crest Ratio	3:1 Maximum							
Harmonic Distortion (100% Load)	≤ 2% THD (Linear Load); ≤ 4% THD (Non-Linear Load)							
Transfer Time (Line ↔ Battery)	0 ms							
Transfer Time (Inverter ↔ Bypass)	Synchronous = 0 ms; Asynchronous < 4 ms				Synchronous = 0 ms; Asynchronous < 1 cycle			
Transfer Time (Inverter ↔ ECO)	< 10 ms				< 20 ms			
BYPASS INPUT								
Nominal Voltage	Ph-Ph 380V/400V/415V							
Phase	3-Phase with Neutral (3-Phase, Neutral + Ground)							
Voltage Range	Upper Limit: Ph-N 231-264V Lower Limit: Ph-N 176-209V				Upper Limit: +10%, +15% or +20% Lower Limit: -10%, -20% or -30%			
Nominal Frequency	50/60 Hz (Auto-Selectable)							
Frequency Range	Selectable: ± 1-4 Hz (Default: ± 4 Hz)				Selectable: ± 1 Hz, ± 2 Hz, ± 4 Hz (Default: ± 4 Hz)			
Overload (Bypass Mode)	< 150% = 1 min				105-110% = 1 h; 111-125% = 10 min; 126-150% = 1 min; > 150% = 200 ms			
EFFICIENCY								
AC Line Mode	94% at 100% Resistive Load; 93,5% at 50% Resistive Load				94% at 100% Resistive Load; 93,5% at 50% Resistive Load			
ECO Mode	98%, at 100% Resistive Load; 97,5% at 50% Resistive Load				98% at 100% Resistive Load; 97% at 50% Resistive Load			
Battery Mode	93,5% at 100% Resistive Load; 93% at 50% Resistive Load				93% at 100% Resistive Load; 92,5% at 50% Resistive Load			
PARALLEL								
Parallel for Capacity	Up to 3 Units				Up to 2 Units			
Parallel for Redundancy	N/A				Req. Ext. N+1 Bypass Panel	Up to 2 Units	Up to 2 Units	Up to 2 Units

Scalable Battery Cabinets Complete Your Installation

- Scalable battery cabinets support backup runtime from 5 minutes to 3 hours
- Add the optional TEMPC100200 thermostat kit to enable temperature-compensated charging (available for 100-200 kVA models)

Note: 30-40 kVA units are available with internal batteries (S3M30KX and S3M40KX) or without internal batteries (S3M30KX-NIB and S3M40KX-NIB). 60-200 kVA units require external battery cabinets.



Model	S3M30KX	S3M40KX	S3M60KX	S3M80KX	S3M100KX	S3M120KX	S3M160KX	S3M200KX
INTERNAL BATTERIES (S3M30KX and S3M40KX include internal batteries. Versions are also available without internal batteries: S3M30KX-NIB and S3M40KX-NIB.)								
Type	12V Non-Spillable VRLA AGM/GEL							
Capacity	9 Ah	10 Ah	No Internal Batteries					
Quantity	80 (2 x Strings of 20 + 20)							
Runtime (50%/100% Load)	17/5,7 min	15/5 min	External Batteries Required for S3M30KX-NIB, S3M40KX-NIB, S3M60KX, S3M80KX, S3M100KX, S3M120KX, S3M160KX and S3M200KX					
Recharge Time	9 h to 90%							
Maximum Charging Current with Included Charging Board	Adjustable up to 4A ± 10% (Default 2A ± 10%)							
Float Voltage	13,65V/Battery; 2,27V/Cell							
Boost Charging	14,1V/Battery; 2,35V/Cell							
End of Discharge	10V/Battery; 1,67V/Cell							
EXTERNAL BATTERIES (S3M30KX-NIB, S3M40KX-NIB, S3M60KX, S3M80KX, S3M100KX, S3M120KX, S3M160KX and S3M200KX require external batteries for backup.)								
Type	12V Non-Spillable VRLA AGM/GEL							
DC Nominal Acceptance Voltage	± 240 VDC							
Quantity	40N (N ≥ 1 x Strings of 20 + 20)							
Maximum Charging Current	Adjustable up to 4A ± 10% (Max 12A with 2 x CBKIT30-40.)	Adjustable up to 8A ± 10% (Max 24A with 2 x CBKIT30-80.)	Adjustable up to 24A ± 1%	Adjustable up to 32A ± 1%	Adjustable up to 40A ± 1%	Adjustable up to 48A ± 1%		
Float Voltage	13,65V/Battery; 2,27V/Cell							
Boost Charging	14,1V/Battery; 2,35V/Cell							
End of Discharge	10V/Battery; 1,67V/Cell							
Charger Temperature Compensation	N/A				-3 mV/Cell/°C (Requires optional TEMPC100200 thermostat kit.)			
PHYSICAL								
Dimensions (H x W x D)	1000 x 300 x 815 mm	1000 x 300 x 815 mm	1010 x 360 x 790 mm	1010 x 360 x 790 mm	1015 x 567 x 945 mm	1015 x 567 x 945 mm	1455 x 567 x 995 mm	1455 x 567 x 995 mm
Unit Weight (With Internal Batteries)	265 kg	316 kg	N/A	N/A	N/A	N/A	N/A	N/A
Unit Weight (Without Internal Batteries)	60 kg	61 kg	108 kg	113 kg	197 kg	232 kg	309 kg	343 kg
ENVIRONMENT								
Operating Temperature	0 to 40° C (≤ 25° C for optimal battery lifespan.)							
Storage Temperature	0 to 35° C (UPS with batteries.); -15 to 60° C (UPS without batteries.)							
Operating Humidity	0 to 95% (Non-Condensing)							
Operating Altitude	< 1000 m (Derate output power by 1% per 100 m above 1000 m.)							
Audible Noise	< 60 dBA at 1 m	< 70 dBA at 1 m	< 70 dBA at 1 m	< 75 dBA at 1 m	< 70 dBA at 1 m	< 70 dBA at 1 m	< 73 dBA at 1 m	< 73 dBA at 1 m
Heat Dissipation (100% Load)	5527 BTU/h	7362 BTU/h	11054 BTU/h	14738 BTU/h	19600 BTU/h	23507 BTU/h	31343 BTU/h	39179 BTU/h
Heat Dissipation (50% Load)	2994 BTU/h	3992 BTU/h	5998 BTU/h	7984 BTU/h	9974 BTU/h	11048 BTU/h	14731 BTU/h	18414 BTU/h
MANAGEMENT								
Network Management Interface	Requires optional WEBCARDLX. (Monitor, control and reboot the UPS using HTML5 web, SSH/telnet and SNMP interfaces. Supports centralised management through integration with a wide range of Network Management Systems and DCIM platforms.)							
Control Panel	62 mm LCD with supplemental LEDs.				Large 254 mm / 10 in. colour LCD touchscreen with supplemental LEDs. (Monitor, control, configure and diagnose the UPS from the display.)			
Contact Closure Interface	Requires Optional RELAYCARDSV Programmable Relay I/O Card							
Remote Emergency Power Off (REPO)	Feature Included (Default: Normally Closed)							
RS-232	Included (Service Only)							
STANDARDS								
Safety	IEC/EN 62040-1:2008+A1:2013 (TUV Approval)							
EMC/EMI	EN 62040-2:2017 / IEC 62040-2:2016 (TUV Approval)							
Ingress Protection Rating	IP20							
CE Marking	Yes							
RoHS Compliant	Yes							
Quality Management System	ISO 9001							
OTHER INFORMATION								
Colour	RAL 9005 Jet Black							
Mobility	Casters							
ACCESSORIES (Sold Separately)								
Scalable Battery Cabinets	Support 5 min to 3 h runtime at 100% load. Available models include BP480V100-NIB, BP480V100, BP480V65-NIB, BP480V65, BP480V40-NIB, BP480V40, BP480V10-NIB, BP480V10, BP480V09. (NIB=No internal batteries.)							
Network Management Card	WEBCARDLX (Monitor, control and reboot the UPS using HTML5 web, SSH/telnet and SNMP interfaces. Supports centralised management through integration with a wide range of Network Management Systems and DCIM platforms.)							
Remote Environmental Sensors (Require WEBCARDLX.)	E2MT (Temperature Sensor); E2MTDO (Temperature Sensor with Digital Outputs); E2MTDI (Temperature Sensor with Digital Inputs); E2MTHDI (Temperature/Humidity Sensor with Digital Inputs)							
Contact Closure Card	RELAYCARDSV							
External Bypass Panel	Contact your local sales representative or distributor for more information.							
Scalable Charger Board Kits	CBKIT30-40 (Adds 4A; Max 2)	CBKIT30-80 (Adds 8A; Max 2)	N/A					
Parallel Cable Kit	P3080KIT				P100200KIT			
Battery Temperature Compensation Thermostat Kit	N/A				TEMPC100200			

Tripp Lite Care Service and Support

Tripp Lite CareSM service and support keeps your UPS in peak condition. Our comprehensive preventive maintenance procedures prevent breakdowns, extend equipment lifespan and reduce your cost of ownership. Tripp Lite Certified Service Providers worldwide provide localised service plans with world-class capability, allowing you to benefit from our technical expertise and OEM spare parts. By ensuring your equipment is installed correctly, maintained properly and performing reliably, Tripp Lite Care keeps your organisation fully operational around the clock for years to come.



Tripp Lite Care Annual Service Contracts

Comprehensive service contracts are available in several tiers. You can also add services as needed, allowing you to customise every aspect of service to fit the needs of your organisation and your budget.



	ESSENTIAL	BRONZE	SILVER	GOLD
Technical Support – 24/7	✓	✓	✓	✓
4-Hour Response – 24/7				✓
8-Hour Response – 24/7			✓	
Next Working Day Response, Normal Work Hours	✓	✓		
Travel and Labour Costs Included	✓	✓	✓	✓
One Maintenance Visit Included – 24/7				✓
One Maintenance Visit Included, Weekdays, Anytime			✓	
One Maintenance Visit Included, Weekdays, Normal Work Hours		✓		
Replacement Parts Included (Excluding Consumables*)			✓	✓
Replacement Parts Discounted	✓	✓		
Consumables* Discounted	✓	✓	✓	✓

Service availability varies with location. Please contact your local Tripp Lite sales representative for more information.
*Consumables include batteries, capacitors and fans.

Tripp Lite Care Add-on Services

Extended Warranties | Installation Assistance | UPS Commissioning | User Training
Service Level Agreements (SLAs) | Preventive Maintenance with Status Reports | Battery Service/Replacement
Rapid-Response Repair Service | Spares | 24/7 Technical Support



Pulse Supply
909 Ridgebrook Road., Sparks, Maryland 21152, USA
TEL : +1-410-583-1701 FAX : +1-410-583-1704
E-mail: sales@pulsesupply.com
https://www.pulsesupply.com/tripp-lite

