

MV-374/MV-378

4 / 8 Channels VoIP GSM Gateway



MV-374/MV-378 is a 4/8 channels VoIP GSM Gateway for call termination (VoIP to GSM) and origination (GSM to VoIP). It is SIP based and compatible with Asterisk, Trixbox, IP-PBX and VoIPBuster. It can enable to make 4/8 calls simultaneously from VoIP to GSM networks and GSM network to VoIP .

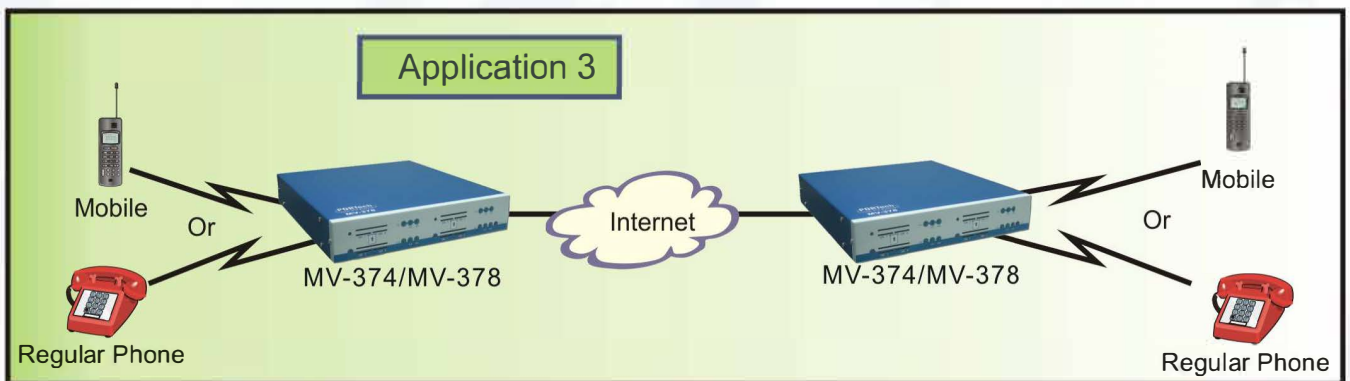
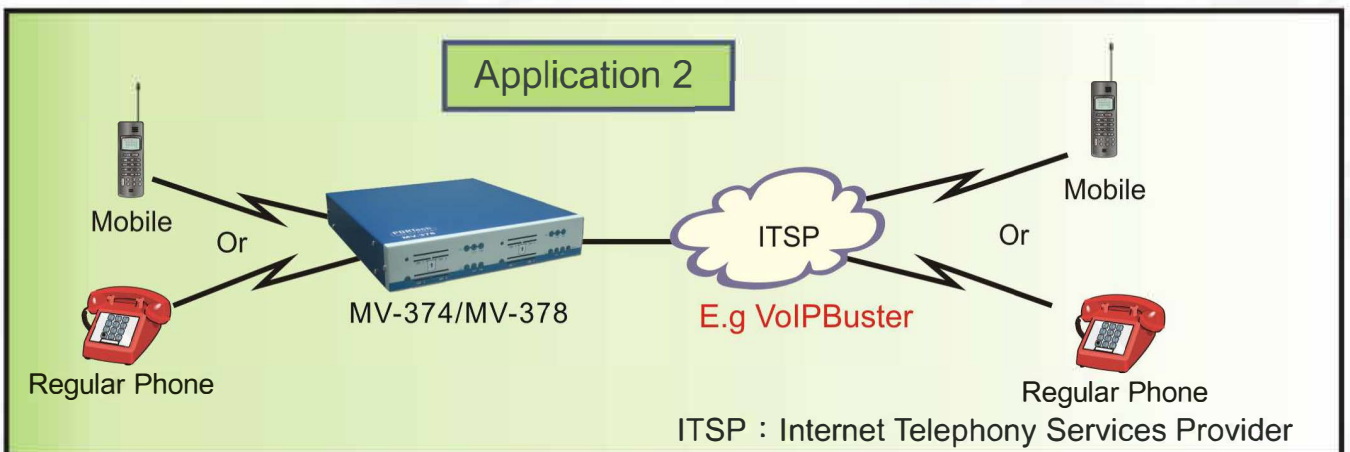
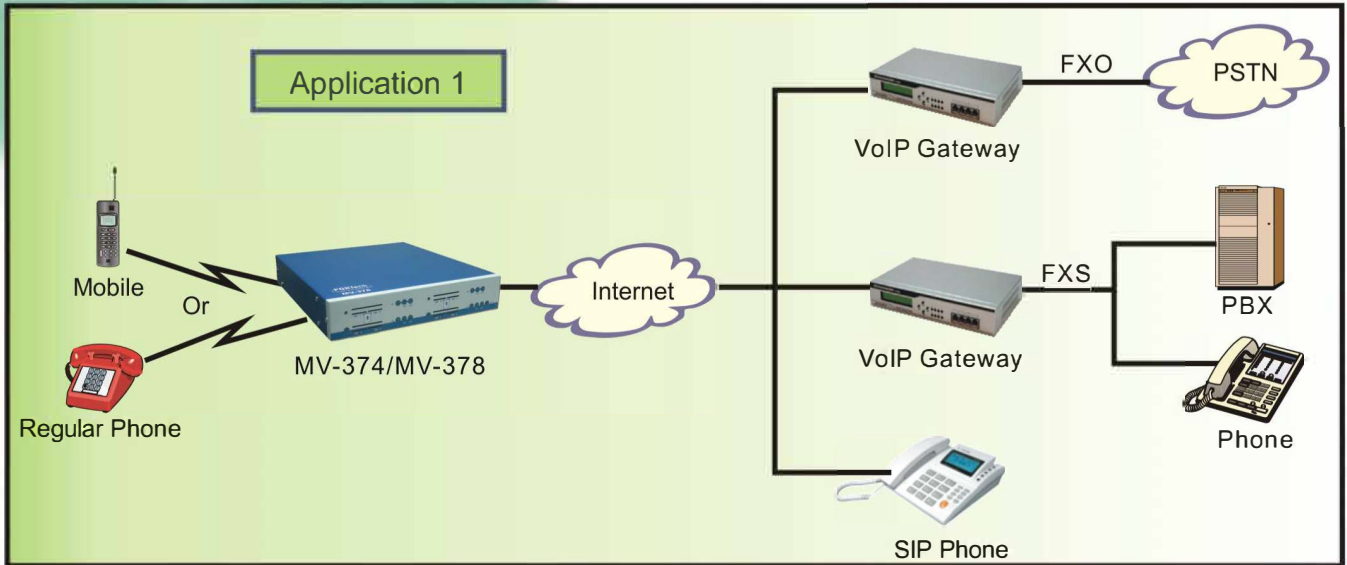
Function

- VoIP(SIP) 、 GSM conversion.(MV-374/MV-378).
- 50 sets of LAN --> MOBILE routes setting.
50 sets of MOBILE --> LAN routes setting.
- Voice response for setting and status(dial in from mobile).
- For call termination (VoIP to GSM) and origination (GSM to VoIP).
- Standard SIP(RFC2543 、 RFC3261) protocol 、 communicates with other gateway or PC.
- All functions can be set on web.
- SMS sending and receiving.

Specification

- Protocols: SIP (RFC2543, RFC3261).
- TCP/IP: IP/TCP/UDP/RTP/RTCP, CMP/ARP/RARP/SNTP, DHCP/DNS Client, IEEE802.1P/Q, ToS/DiffServ, NAT Traversal, STUN, uPnP, IP Assignment, Static IP, DHCP, PPPoE.
- Codec: G.711 u-Law, G.711 a-Law, G.723.1 (5.3k), G.723.1 (6.3k), G.729A, G.729A/B, Voice Quality, VAD, CNG, AEC, LEC, Packet loss.
- GSM (MV-374/MV-378): Triband: 900/1800/1900 MHz, Triband: 850/1800/1900MHz. 3G/UMTS Version for all world and Japen (SoftBank Mobile).
3G: EDGE/GPRS 850/ 900/1800/1900 MHz / HSDPA/UMTS 850/1900/2100 MHz.

MV-374/MV-378



PORTech
Your CTO Partner