



# DIGI XBEE GATEWAY FAMILY

Programmable gateway connects Digi XBee devices to cloud-based applications over cellular, Wi-Fi or Ethernet

Digi XBee® Gateway provides a low-cost Digi XBee to IP solution, featuring scalable remote configuration and management of **Digi XBee** networks with **Digi Remote Manager**® (Digi RM). By default, all Digi XBee data sent to the gateway is automatically available to online applications via Digi RM.

With a simple, open-source Python development environment, this gateway also enables custom applications to run locally while interfacing across existing Ethernet/Wi-Fi/cellular networks for WAN connectivity to cloud-based software applications.

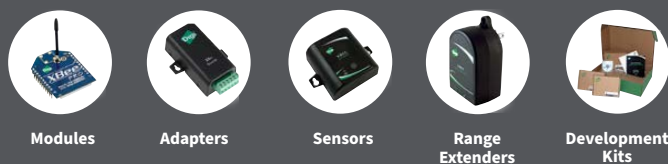
Digi XBee Gateway products can be managed remotely via Digi RM, allowing users to remotely manage thousands of deployed devices, supporting features like remote firmware upgrades and event alarms.

Digi XBee Gateway can be tested and developed using the Digi XBee ZigBee Cloud Kit, which fully integrates the Digi XBee Gateway, Digi XBee Module, Digi RM and a sample web application into a cohesive internet-connected solution. This kit is a powerful tool that enables developers to create internet-connected prototypes in 30 minutes or less.

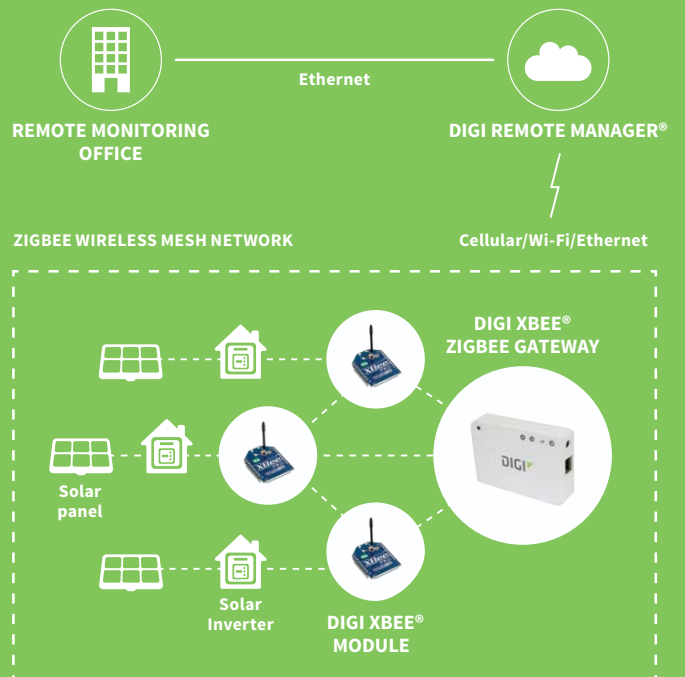
## BENEFITS

- Open Source Python environment for custom application development on the gateway
- Out-of-box integration with **Digi Remote Manager** enables remote connectivity, configuration and management of **Digi XBee** networks
- Secure, scalable access to an unlimited number of remote Digi XBee-based devices
- Cellular, Wi-Fi and Ethernet WAN options for flexible broadband connectivity

## RELATED PRODUCTS



## APPLICATION EXAMPLE



CONNECTING ANY APPLICATION TO ANYTHING, ANYWHERE  
YOUR BRAND, YOUR FIRMWARE AND CONFIGURATION

YOUR BRAND, YOUR FIRMWARE AND CONFIGURATION

Gain critical insights into your deployed devices and manage your network with **Digi Remote Manager®** (Digi RM) — the command center for your deployment.

Digi RM is a cloud-based solution that facilitates easy setup, mass configuration, maintenance and support for hundreds or even thousands of remote Digi devices. Digi RM lets you evaluate, update and configure your Digi enterprise products — and the health of your network — at scale after deployment.

Businesses can gain new intelligence through data visualization, increase efficiency of operations by managing devices en masse, and keep their data safe in the cloud with the Digi RM platform.

**BENEFITS**

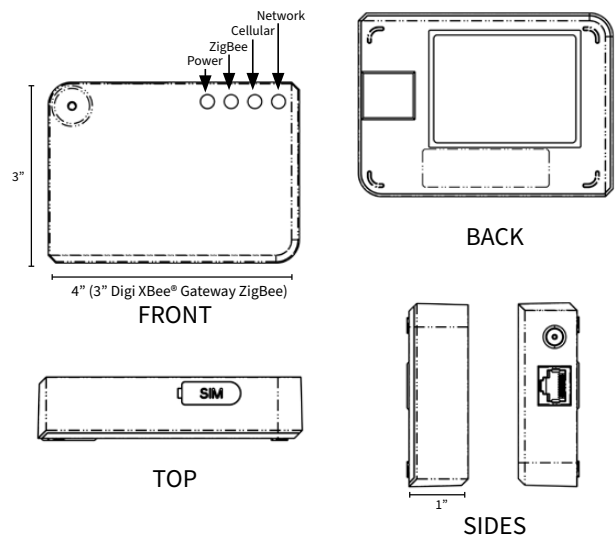
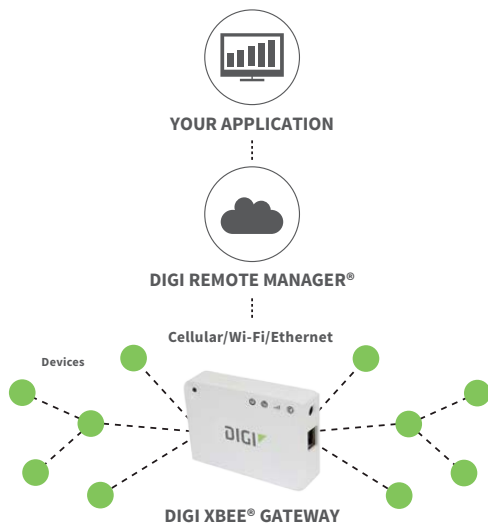
- Out-of-the-box compatibility with Digi hardware
- Easy application integration and open APIs
- No costly infrastructure to operate or maintain
- Multi-tenant, cloud-based architecture
- Manage devices en masse
- Two-way device to cloud communication
- Asynchronous event updates and alerts
- Reliable, scalable and secure
- Broadcast network grade service ability - operating 99.9% or greater
- Dedicated Security Office

Digi knows that a gateway is only one part of our customers' complex market offering. We are therefore pleased to offer a simple private branding process as a value-add to the Digi XBee® Gateway product family.

For a fixed initial charge and a minimum order commitment, Digi customers get a custom part number with their brand, fixed (or "frozen") firmware, and custom default configuration.

**BENEFITS**

- Place your brand on the enclosure
- Pre-load your specific firmware and configuration
- All for a fixed price



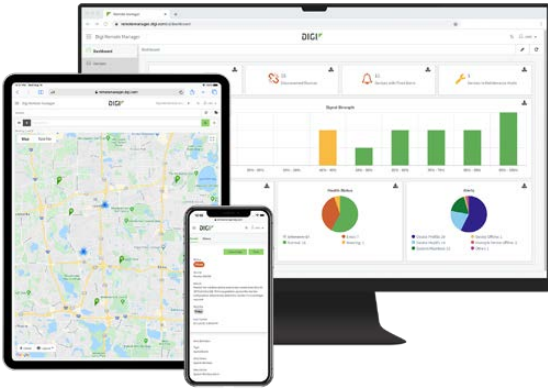
## SPECIFICATIONS

## DIGI XBEE® GATEWAY

## DIGI XBEE® GATEWAY - CELLULAR

GENERAL		
MANAGEMENT	Secure enterprise management via <a href="#">Digi Remote Manager®</a>	
PROTOCOLS	UDP/TCP, DHCP	
LEDS	Power, network (LAN/WAN), ZigBee (HAN/PAN)	Power, network (LAN/WAN), ZigBee (HAN/PAN), cellular signal strength
SECURITY	SSL tunnels, WEP-40, WEP-104, WPA/WPA2, authentication with PSK and EAP	SSL tunnels, cellular network security
DIMENSIONS (L X W X H)	7.62 cm x 7.62 cm x 2.54 cm (3 in x 3 in x 1 in)	7.62 cm x 10.16 cm x 2.54 cm (3 in x 4 in x 1 in)
DEVELOPMENT		
PYTHON VERSION	2.7.1	
OPERATING SYSTEM	Digi Accelerated Linux	
DIGI XBEE GATEWAY APPLICATION	Digi XBee® data sent to the gateway is automatically available to online applications via Digi Remote Manager	
PROCESSOR AND MEMORY (VARIES BY FIRMWARE AND OS VERSION)	Freescale i.MX28, 20 MB RAM, 10 MB file space	
ZIGBEE		
ZIGBEE STACK	ZigBee PRO Feature Set, Ember EM357	
ZIGBEE MODULE	Digi XBee ZB SMT (S2C)	
TRANSMIT POWER/RECEIVE SENSITIVITY	Worldwide version: Digi XBee ZB SMT transmit power 6.3 mW (+8 dBm); receiver sensitivity (1% PER) -102 dBm; North American version: Digi XBee-PRO® ZB SMT transmit power: 63 mW (+18 dBm); receiver sensitivity (1% PER) -102 dBmP	
CELLULAR		
CELLULAR MODULE	N/A	Telit 910 Series
GSM BANDS	N/A	800/850/900/AWS/1900/2100 MHz 3G/UMTS
CDMA BANDS	N/A	800/1900 MHz 1x RTT
WI-FI		
802.11	b/g/n	N/A
DATA RATE	Up to 72.2 Mbps	N/A
TRANSMIT POWER	18 dBm typical (varies by mode, channel and region)	N/A
RECEIVER SENSITIVITY	Up to -87 dBm @ 11 Mbps	N/A
MODES	AP client modes only; access point mode not supported	N/A
ETHERNET		
PORTS	1 RJ-45 port	
PHYSICAL LAYER	10/100 Base-T	
ROUTING	Ethernet port designed for configuration and WAN backhaul	
POWER REQUIREMENTS		
POWER SUPPLY	5 VDC power supply with barrel connector included	
POWER CONSUMPTION	Typical: 1.2 W, Max: 2.5 W	Typical: 3.5 W, Max: 15 W
ENVIRONMENTAL		
OPERATING TEMPERATURE	0° C to 40° C (32° F to 104° F)	
RELATIVE HUMIDITY	5% to 95% (non-condensing)	
REGULATORY APPROVALS		
MOBILE CERTIFICATIONS (GSM)	N/A	AT&T
MOBILE CERTIFICATIONS (CDMA)	N/A	Verizon and Sprint
SAFETY	UL 60950-1, CSA C22.2 and EN 60950-1	
EMISSIONS/IMMUNITY/TRANSMITTER	CE, FCC Part 15 (Class B), IC, ETSI	
WARRANTY		
PRODUCT WARRANTY	3-year	

# DIGI REMOTE MANAGER®



Digi Remote Manager is the technology platform that brings networks to the next level, allowing networks — and the people who manage them — to work smarter. With Digi Remote Manager you can transform a multitude of dispersed IoT devices into a dynamic, intelligent network. Now you can easily deploy, monitor and diagnose thousands of mission-critical devices from a single point of command — on your desktop, tablet or phone. All the while, its software-defined security diligently safeguards your entire Digi ecosystem.

Learn more at [www.digi.com/digi-remote-manager](http://www.digi.com/digi-remote-manager)

## CAPABILITIES

- Activate, monitor and diagnose your mission-critical devices from a single point of command and control — on your desktop or mobile app
- Schedule key operations — including firmware updates and file management — on a single device or on a group of devices, keeping your network functionality up-to-date and maintaining compliance standards
- Manage edge devices out-of-band via console terminal access
- Keep tabs on device health and connectivity across device deployments of any size
- Create detailed reports and enable real-time alerts for specified conditions
- Integrate device data through open APIs to gain deeper insights and control with third-party applications
- Report and alert on performance statistics, including connection history, signal quality, latency, data usage and packet loss

## INFRASTRUCTURE

- Hosted in a commercial-grade cloud server environment that meets SOC 1®, SOC 2® and SOC 3® standards
- Superior availability, operating to 99.9% or greater
- Open APIs available to support application development

## SECURITY

- More than 175 security controls in place to protect your data
- Member of the Center for Internet Security® (CIS®)
- Enables compliance with security frameworks like ISO27002, HIPAA, NIST and more
- Earned Skyhigh's CloudTrust™ Program highest rating of Enterprise-Ready

PART NUMBERS	DESCRIPTION
XKA2C-Z7T-U	Digi XBee ZigBee Cloud Kit
XKA2C-Z7T-W	Digi XBee ZigBee Cloud Kit (International)
X2E-Z3C-E1-A	Digi XBee Gateway - ZigBee to Ethernet
X2E-Z3C-E1-W	Digi XBee Gateway - ZigBee to Ethernet (International)
X2E-Z3C-W1-A	Digi XBee Gateway - ZigBee to Ethernet/Wi-Fi
X2E-Z3C-W1-W	Digi XBee Gateway - ZigBee to Ethernet/Wi-Fi (International)
X2E-Z4C-D2-A	Digi XBee Gateway - ZigBee to Verizon 3G
X2E-Z4C-H1-A	Digi XBee Gateway - ZigBee to GSM 3G (AT&T)

PART NUMBERS	DIGI REMOTE MANAGER®
DIGI-RM-STD-1YR	Digi Remote Manager Standard - 1-year subscription
DIGI-RM-PRM-1YR	Digi Remote Manager Premier - 1-year subscription
DIGI-RM-PRM-3YR	Digi Remote Manager Premier - 3-year subscription
DIGI-RM-PRM-5YR	Digi Remote Manager Premier - 5-year subscription

DIGI SERVICE AND SUPPORT / You can purchase with confidence knowing that Digi is always available to serve you with expert technical support and our industry leading warranty. For detailed information visit [www.digi.com/support](http://www.digi.com/support).

© 1996-2021 Digi International Inc. All rights reserved.  
All trademarks are the property of their respective owners.

91002791  
D2/321



909 Ridgebrook Road., Sparks, Maryland 21152, USA  
TEL : +1-410-583-1701 FAX : +1-410-583-1704  
E-mail: [sales@pulsesupply.com](mailto:sales@pulsesupply.com)  
<https://www.pulsesupply.com/digi-products>

